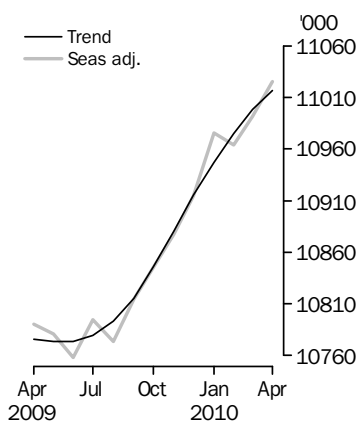


# LABOUR FORCE

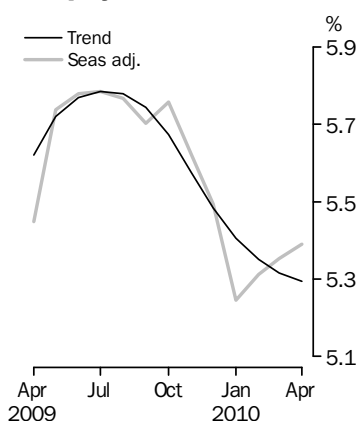
AUSTRALIA

EMBARGO: 11.30AM (CANBERRA TIME) THURS 13 MAY 2010

## Employed Persons



## Unemployment rate



## KEY FIGURES

	Mar 2010	Apr 2010	Mar 10 to Apr 10	Apr 09 to Apr 10
<b>Trend</b>				
Employed persons ('000)	10 998.2	11 016.5	18.3	2.2 %
Unemployed persons ('000)	617.4	615.9	-1.5	-4.0 %
Unemployment rate (%)	5.3	5.3	0.0 pts	-0.3 pts
Participation rate (%)	65.2	65.2	0.0 pts	-0.2 pts
<b>Seasonally Adjusted</b>				
Employed persons ('000)	10 991.8	11 025.5	33.7	2.2 %
Unemployed persons ('000)	621.6	628.1	6.5	1.0 %
Unemployment rate (%)	5.4	5.4	0.0 pts	-0.1 pts
Participation rate (%)	65.2	65.2	0.1 pts	-0.1 pts

## KEY POINTS

### TREND ESTIMATES (MONTHLY CHANGE)

- Employment increased to 11,016,500
- Unemployment decreased to 615,900
- Unemployment rate at 5.3%
- Participation rate remained at 65.2%
- Aggregate monthly hours worked increased to 1,537.7 million hours

### SEASONALLY ADJUSTED ESTIMATES (MONTHLY CHANGE)

- Employment increased 33,700 (0.3%) to 11,025,500. Full-time employment increased 37,500 to 7,735,500 and part-time employment decreased 3,900 to 3,290,000.
- Unemployment increased 6,500 (1.0%) to 628,100. The number of persons looking for full-time work increased 7,700 to 451,000 and the number of persons looking for part-time work decreased 1,300 to 177,000.
- Unemployment rate remained at 5.4%. The male unemployment rate decreased 0.1 pt to 5.3% and the female unemployment rate increased 0.2 pts to 5.5%.
- Participation rate at 65.2%.
- Aggregate monthly hours worked decreased 8.3 million hours (0.5%) to 1,531.4 million hours.

## INQUIRIES

For further information about these and related statistics, contact the National Information and Referral Service on 1300 135 070, email [client.services@abs.gov.au](mailto:client.services@abs.gov.au) or Steve Wood on Canberra (02) 6252 6525, email [labourforce@abs.gov.au](mailto:labourforce@abs.gov.au).

# NOTES

## FORTHCOMING ISSUES

<i>ISSUE</i>	<i>RELEASE DATE</i>
May 2010	10 June 2010
June 2010	8 July 2010
July 2010	12 August 2010
August 2010	9 September 2010
September 2010	7 October 2010
October 2010	11 November 2010

.....

## ROUNDING

Estimates of monthly change shown on the front cover have been calculated using unrounded estimates, and may be different from, but are more accurate than, movements obtained from the rounded estimates. The graphs on the front cover also depict unrounded estimates.

## SAMPLING ERROR

The estimates in this publication are based on a sample survey. Therefore, published estimates and the movements derived from them are subject to sampling variability. Standard errors give a measure of this variability, see pages 33 and 34. The interval bounded by two standard errors is the 95% confidence interval, which provides a way of looking at the variability inherent in estimates. This represents a 95% chance that the true value of the estimate lies within that interval.

## MOVEMENTS IN SEASONALLY ADJUSTED SERIES BETWEEN MARCH 2010 AND APRIL 2010

.....

	<u>MONTHLY CHANGE</u>	<u>95% CONFIDENCE INTERVAL</u>
Total Employment	33 700	-19 700 to 87 100
Total Unemployment	6 500	-26 100 to 39 100
Unemployment rate	0.0 pts	-0.2 pts to 0.2 pts
Participation rate	0.1 pt	-0.3 pts to 0.5 pts

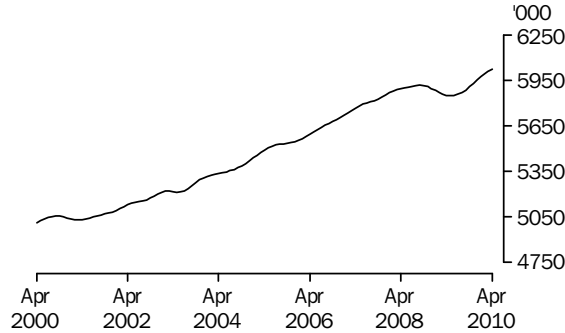
.....

Peter Harper  
Acting Australian Statistician

## EMPLOYED PERSONS TREND ESTIMATES

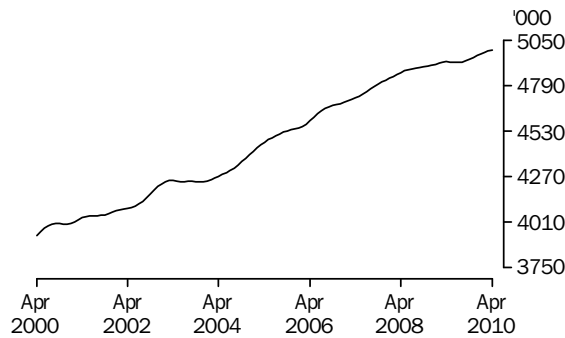
### MALES

The trend estimates of employed males rose from 5,010,800 in April 2000 to 5,916,800 in September 2008. The trend then fell to 5,848,000 in May 2009 before rising to 6,023,300 in April 2010.



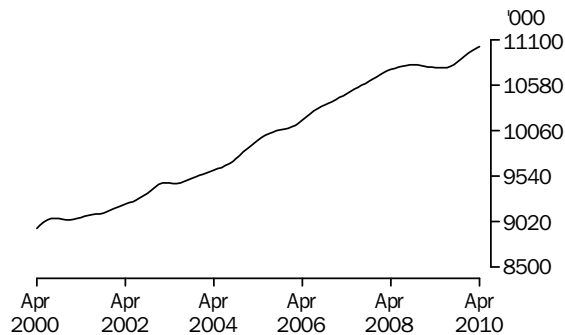
### FEMALES

The trend estimates of employed females generally rose from 3,933,400 in April 2000 to 4,246,200 in April 2003, before falling to 4,240,700 in November 2003. The trend then rose to 4,925,900 in April 2009 before falling to 4,921,700 in July 2009. The trend has since risen to 4,993,200 in April 2010.



### PERSONS

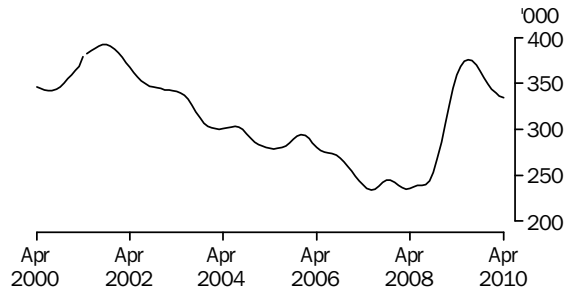
The trend estimates of employed persons rose from 8,944,200 in April 2000 to 10,811,200 in October 2008. The Trend then fell to 10,773,300 in May 2009 before rising to 11,016,500 in April 2010.



## UNEMPLOYED PERSONS TREND ESTIMATES

### MALES

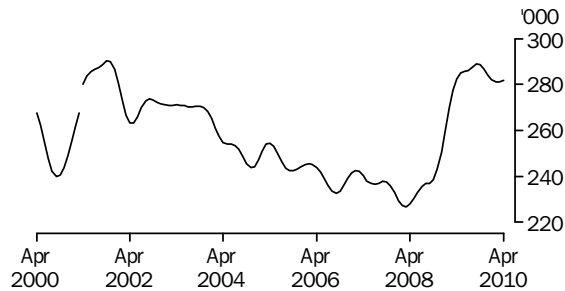
The trend estimates of unemployed males generally fell from 346,000 in April 2000 to 342,000 in August 2000. The trend then rose to 392,000 in September 2001, before generally falling to 235,200 in March 2008. The trend then rose to 375,800 in July 2009 before falling to 334,200 in April 2010.



Series break at April 2001; see paragraph 17 of Explanatory Notes.

### FEMALES

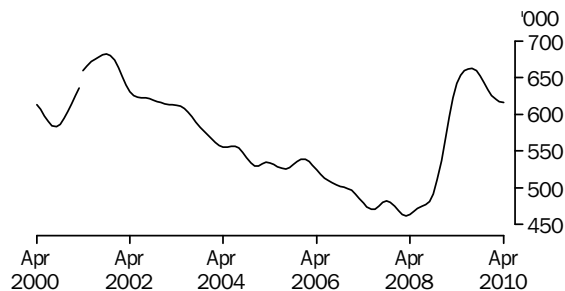
The trend estimates of unemployed females fell from 267,500 in April 2000 to 239,700 in September 2000. The trend then rose to 290,200 in October 2001, before generally falling to 226,800 in March 2008. The trend then rose to 289,000 in September 2009 before falling to 281,000 in March 2010. The trend has since increased 600 to stand at 281,600.



Series break at April 2001; see paragraph 17 of Explanatory Notes.

### PERSONS

The trend estimates of unemployed persons generally fell from 613,500 in April 2000 to 582,900 in September 2000. The trend then rose to 682,100 in October 2001, before generally falling to 462,000 in March 2008. The trend then rose to 662,000 in August 2009, before falling to 615,900 in April 2010.

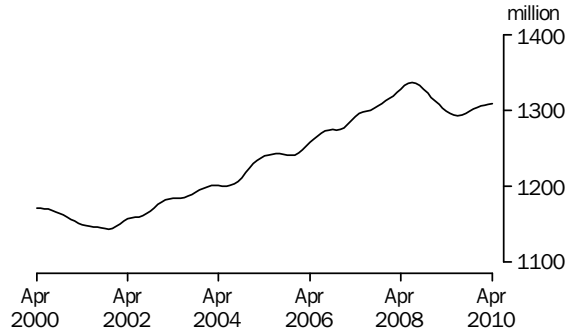


Series break at April 2001; see paragraph 17 of Explanatory Notes.

# AGGREGATE MONTHLY HOURS WORKED TREND ESTIMATES

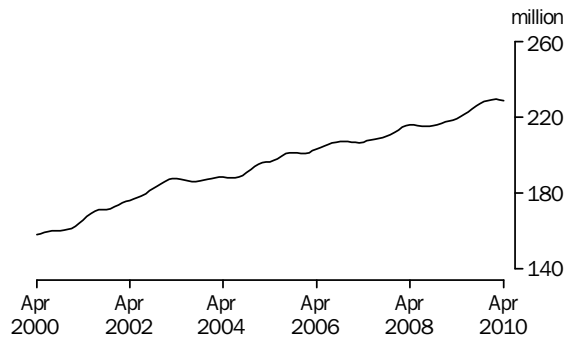
## FULL TIME

The trend estimate of full time aggregate monthly hours worked fell from 1,172 million hours in April 2000 to 1,143 million hours in November 2001. The trend then generally rose to 1,337 million hours in July 2008, then fell to 1,293 million hours in July 2009, before rising to stand at 1,309 in April 2010.



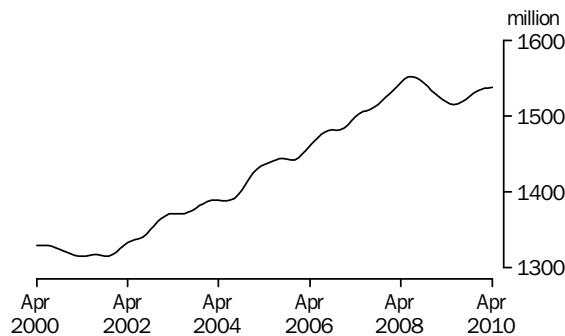
## PART TIME

The trend estimate of part time aggregate monthly hours worked has steadily risen from 158 million hours in April 2000 to 229 million hours in April 2010.



## TOTAL

The trend estimate of total aggregate monthly hours worked fell from 1,330 million hours in April 2000 to 1,315 million hours in November 2001. The trend then generally rose to 1,552 million hours in July 2008 before falling to 1,515 million hours in June 2009. The trend has since risen to stand at 1,538 million hours in April 2010.



# LABOUR FORCE STATUS (AGED 15 YEARS & OVER): Trend

	EMPLOYED			UNEMPLOYED		UNEMPLOYMENT RATE			Participation rate
	Full time	Part time	Total	Looking for f/t work	Total	Labour force	Looking for f/t work	Total	
	'000	'000	'000	'000	'000	'000	%	%	
MALES									
April 2007	4 904.8	861.1	5 765.9	188.0	239.3	6 005.2	3.7	4.0	72.4
April 2008	4 994.4	898.6	5 892.9	182.6	235.7	6 128.6	3.5	3.8	72.6
2009									
April	4 921.2	928.9	5 850.1	291.2	359.1	6 209.2	5.6	5.8	72.2
May	4 909.8	938.1	5 848.0	300.4	368.7	6 216.6	5.8	5.9	72.2
June	4 904.1	946.6	5 850.8	305.8	373.9	6 224.6	5.9	6.0	72.1
July	4 903.5	954.2	5 857.7	308.2	375.8	6 233.5	5.9	6.0	72.1
August	4 906.9	962.3	5 869.2	307.5	374.5	6 243.7	5.9	6.0	72.1
September	4 914.4	971.5	5 885.9	303.7	370.1	6 256.0	5.8	5.9	72.1
October	4 925.7	981.0	5 906.8	297.1	363.4	6 270.1	5.7	5.8	72.2
November	4 940.9	989.0	5 930.0	289.4	355.7	6 285.7	5.5	5.7	72.2
December	4 957.8	995.1	5 953.0	282.3	349.0	6 301.9	5.4	5.5	72.2
2010									
January	4 975.5	999.3	5 974.8	276.0	343.5	6 318.3	5.3	5.4	72.2
February	4 992.8	1 001.3	5 994.2	271.1	339.3	6 333.5	5.2	5.4	72.2
March	5 008.8	1 001.6	6 010.4	267.6	336.4	6 346.8	5.1	5.3	72.2
April	5 022.8	1 000.5	6 023.3	265.3	334.2	6 357.5	5.0	5.3	72.2
FEMALES									
April 2007	2 618.5	2 100.7	4 719.2	145.0	240.2	4 959.5	5.2	4.8	57.9
April 2008	2 701.1	2 163.0	4 864.1	131.6	228.1	5 092.2	4.6	4.5	58.5
2009									
April	2 709.4	2 216.4	4 925.9	177.6	282.5	5 208.4	6.2	5.4	58.8
May	2 703.5	2 221.8	4 925.3	181.7	285.0	5 210.3	6.3	5.5	58.8
June	2 693.7	2 229.3	4 923.1	184.3	285.6	5 208.7	6.4	5.5	58.7
July	2 683.6	2 238.1	4 921.7	186.0	286.0	5 207.8	6.5	5.5	58.6
August	2 677.1	2 246.6	4 923.7	187.6	287.5	5 211.2	6.5	5.5	58.5
September	2 674.0	2 255.6	4 929.6	188.4	289.0	5 218.6	6.6	5.5	58.5
October	2 674.3	2 264.6	4 938.9	187.4	288.8	5 227.7	6.5	5.5	58.5
November	2 677.1	2 273.6	4 950.7	185.0	286.7	5 237.4	6.5	5.5	58.5
December	2 680.1	2 282.2	4 962.3	181.9	284.2	5 246.5	6.4	5.4	58.5
2010									
January	2 682.2	2 290.1	4 972.3	179.0	282.1	5 254.4	6.3	5.4	58.4
February	2 684.0	2 296.6	4 980.6	176.8	281.1	5 261.7	6.2	5.3	58.4
March	2 686.4	2 301.4	4 987.8	175.3	281.0	5 268.8	6.1	5.3	58.4
April	2 689.0	2 304.2	4 993.2	174.8	281.6	5 274.8	6.1	5.3	58.3
PERSONS									
April 2007	7 523.3	2 961.9	10 485.1	333.0	479.5	10 964.6	4.2	4.4	65.1
April 2008	7 695.5	3 061.5	10 757.0	314.2	463.9	11 220.8	3.9	4.1	65.4
2009									
April	7 630.6	3 145.3	10 776.0	468.9	641.6	11 417.6	5.8	5.6	65.4
May	7 613.3	3 160.0	10 773.3	482.1	653.6	11 426.9	6.0	5.7	65.4
June	7 597.9	3 176.0	10 773.8	490.1	659.5	11 433.3	6.1	5.8	65.3
July	7 587.1	3 192.4	10 779.4	494.3	661.8	11 441.3	6.1	5.8	65.3
August	7 584.0	3 208.9	10 792.9	495.1	662.0	11 454.9	6.1	5.8	65.2
September	7 588.4	3 227.1	10 815.5	492.1	659.1	11 474.6	6.1	5.7	65.2
October	7 600.1	3 245.6	10 845.7	484.6	652.2	11 497.9	6.0	5.7	65.2
November	7 618.0	3 262.6	10 880.6	474.4	642.4	11 523.1	5.9	5.6	65.2
December	7 637.9	3 277.3	10 915.3	464.2	633.2	11 548.4	5.7	5.5	65.2
2010									
January	7 657.6	3 289.4	10 947.1	455.0	625.6	11 572.6	5.6	5.4	65.2
February	7 676.9	3 298.0	10 974.8	447.9	620.3	11 595.2	5.5	5.3	65.2
March	7 695.2	3 303.0	10 998.2	443.0	617.4	11 615.6	5.4	5.3	65.2
April	7 711.8	3 304.6	11 016.5	440.1	615.9	11 632.3	5.4	5.3	65.2

**LABOUR FORCE STATUS (AGED 15 YEARS & OVER): Seasonally Adjusted**

	EMPLOYED			UNEMPLOYED		UNEMPLOYMENT RATE			Participation rate
	Full time	Part time	Total	Looking for f/t work	Total	Labour force	Looking for f/t work	Total	
	'000	'000	'000	'000	'000	'000	%	%	
MALES									
April 2007	4 898.8	866.7	5 765.5	188.6	237.0	6 002.5	3.7	3.9	72.4
April 2008	4 993.4	894.1	5 887.6	195.6	245.4	6 132.9	3.8	4.0	72.6
2009									
April	4 940.0	920.6	5 860.6	276.9	347.7	6 208.3	5.3	5.6	72.2
May	4 906.1	941.1	5 847.2	306.5	372.9	6 220.1	5.9	6.0	72.2
June	4 905.7	930.6	5 836.3	310.7	375.8	6 212.1	6.0	6.0	72.0
July	4 896.0	965.5	5 861.5	314.1	383.3	6 244.8	6.0	6.1	72.3
August	4 906.2	966.6	5 872.8	299.3	369.7	6 242.5	5.7	5.9	72.1
September	4 922.8	969.9	5 892.6	298.5	361.3	6 254.0	5.7	5.8	72.1
October	4 919.1	977.7	5 896.9	304.3	370.0	6 266.9	5.8	5.9	72.1
November	4 941.2	979.6	5 920.7	294.7	362.8	6 283.5	5.6	5.8	72.2
December	4 958.8	994.5	5 953.3	284.4	349.4	6 302.7	5.4	5.5	72.2
2010									
January	4 970.8	1 025.9	5 996.7	259.8	327.5	6 324.2	5.0	5.2	72.3
February	4 998.7	996.5	5 995.3	272.7	339.0	6 334.3	5.2	5.4	72.2
March	5 007.3	992.6	5 999.9	268.1	342.3	6 342.2	5.1	5.4	72.2
April	5 032.4	994.5	6 026.9	272.1	337.9	6 364.8	5.1	5.3	72.2
FEMALES									
April 2007	2 607.6	2 110.2	4 717.8	139.7	238.7	4 956.6	5.1	4.8	57.9
April 2008	2 696.2	2 193.7	4 890.0	139.2	229.2	5 119.2	4.9	4.5	58.8
2009									
April	2 714.3	2 215.8	4 930.0	173.6	274.0	5 204.0	6.0	5.3	58.8
May	2 717.2	2 216.2	4 933.4	182.0	283.3	5 216.7	6.3	5.4	58.8
June	2 695.4	2 226.6	4 922.0	186.6	284.0	5 206.0	6.5	5.5	58.6
July	2 688.5	2 244.4	4 932.9	180.3	279.5	5 212.4	6.3	5.4	58.6
August	2 650.3	2 250.2	4 900.4	185.5	289.5	5 189.9	6.5	5.6	58.3
September	2 669.6	2 252.4	4 922.1	194.3	292.6	5 214.7	6.8	5.6	58.5
October	2 680.1	2 268.0	4 948.1	189.3	292.5	5 240.6	6.6	5.6	58.6
November	2 690.8	2 266.1	4 956.9	186.5	285.3	5 242.1	6.5	5.4	58.5
December	2 681.1	2 280.6	4 961.7	178.0	285.1	5 246.8	6.2	5.4	58.5
2010									
January	2 684.9	2 293.8	4 978.7	179.8	280.0	5 258.6	6.3	5.3	58.5
February	2 661.8	2 307.0	4 968.8	173.0	276.0	5 244.8	6.1	5.3	58.2
March	2 690.7	2 301.2	4 991.9	175.2	279.3	5 271.2	6.1	5.3	58.4
April	2 703.1	2 295.5	4 998.6	178.9	290.1	5 288.7	6.2	5.5	58.4
PERSONS									
April 2007	7 506.4	2 976.9	10 483.3	328.3	475.7	10 959.1	4.2	4.3	65.0
April 2008	7 689.7	3 087.9	10 777.5	334.9	474.6	11 252.1	4.2	4.2	65.6
2009									
April	7 654.3	3 136.4	10 790.6	450.5	621.7	11 412.3	5.6	5.4	65.4
May	7 623.3	3 157.3	10 780.6	488.5	656.2	11 436.8	6.0	5.7	65.4
June	7 601.1	3 157.2	10 758.3	497.3	659.8	11 418.1	6.1	5.8	65.2
July	7 584.5	3 209.9	10 794.4	494.4	662.8	11 457.3	6.1	5.8	65.3
August	7 556.5	3 216.8	10 773.3	484.7	659.2	11 432.5	6.0	5.8	65.1
September	7 592.4	3 222.3	10 814.7	492.8	654.0	11 468.7	6.1	5.7	65.2
October	7 599.2	3 245.7	10 844.9	493.6	662.5	11 507.5	6.1	5.8	65.3
November	7 632.0	3 245.6	10 877.6	481.2	648.1	11 525.6	5.9	5.6	65.3
December	7 639.8	3 275.1	10 914.9	462.4	634.5	11 549.5	5.7	5.5	65.3
2010									
January	7 655.7	3 319.6	10 975.4	439.6	607.4	11 582.8	5.4	5.2	65.3
February	7 660.6	3 303.5	10 964.1	445.7	615.0	11 579.1	5.5	5.3	65.1
March	7 698.0	3 293.8	10 991.8	443.3	621.6	11 613.4	5.4	5.4	65.2
April	7 735.5	3 290.0	11 025.5	451.0	628.1	11 653.5	5.5	5.4	65.2

**LABOUR FORCE STATUS (AGED 15 YEARS & OVER): Original**

	EMPLOYED			UNEMPLOYED			UNEMPLOYMENT RATE			Participation rate	
	Full time	Part time	Total	Looking for f/t work	Total	Labour force	Not in labour force	Civilian population aged 15 years and over	Looking for f/t work		Total
	'000	'000	'000	'000	'000	'000	'000	'000	%		%
MALES											
April 2007	4 881.9	887.0	5 768.8	191.8	242.1	6 011.0	2 279.2	8 290.2	3.8	4.0	72.5
April 2008	4 977.8	913.6	5 891.4	199.3	250.7	6 142.1	2 301.3	8 443.4	3.9	4.1	72.7
2009											
April	4 925.6	938.6	5 864.2	283.2	356.0	6 220.2	2 382.5	8 602.7	5.4	5.7	72.3
May	4 885.8	955.3	5 841.1	318.7	387.1	6 228.2	2 386.3	8 614.6	6.1	6.2	72.3
June	4 879.1	957.5	5 836.6	317.9	375.1	6 211.7	2 414.8	8 626.5	6.1	6.0	72.0
July	4 911.8	965.2	5 877.0	290.2	349.1	6 226.1	2 415.3	8 641.5	5.6	5.6	72.0
August	4 874.7	958.8	5 833.5	281.3	347.6	6 181.1	2 475.3	8 656.4	5.5	5.6	71.4
September	4 964.0	957.5	5 921.6	292.4	359.9	6 281.5	2 390.0	8 671.4	5.6	5.7	72.4
October	4 908.9	998.9	5 907.8	283.5	346.0	6 253.8	2 435.6	8 689.3	5.5	5.5	72.0
November	4 938.3	956.8	5 895.2	273.5	332.6	6 227.8	2 479.4	8 707.2	5.2	5.3	71.5
December	5 019.4	1 000.0	6 019.3	274.3	341.2	6 360.5	2 364.6	8 725.1	5.2	5.4	72.9
2010											
January	4 961.2	984.2	5 945.4	287.0	359.2	6 304.6	2 441.6	8 746.2	5.5	5.7	72.1
February	5 020.5	968.4	5 988.9	299.6	373.5	6 362.4	2 404.9	8 767.3	5.6	5.9	72.6
March	4 981.9	1 015.8	5 997.7	279.3	366.4	6 364.1	2 424.4	8 788.4	5.3	5.8	72.4
April	5 019.3	1 012.5	6 031.9	278.5	345.7	6 377.6	2 433.9	8 811.4	5.3	5.4	72.4
FEMALES											
April 2007	2 577.8	2 129.7	4 707.4	142.6	246.6	4 954.0	3 608.1	8 562.1	5.2	5.0	57.9
April 2008	2 667.5	2 212.4	4 879.9	142.3	237.7	5 117.6	3 588.9	8 706.6	5.1	4.6	58.8
2009											
April	2 687.1	2 233.5	4 920.6	177.7	284.3	5 204.9	3 650.8	8 855.7	6.2	5.5	58.8
May	2 704.3	2 236.3	4 940.5	180.8	280.6	5 221.1	3 645.7	8 866.8	6.3	5.4	58.9
June	2 666.7	2 265.7	4 932.4	184.7	278.7	5 211.0	3 666.9	8 878.0	6.5	5.3	58.7
July	2 694.0	2 236.0	4 930.1	167.1	256.6	5 186.7	3 705.5	8 892.2	5.8	4.9	58.3
August	2 612.7	2 260.4	4 873.0	172.1	276.2	5 149.2	3 757.2	8 906.5	6.2	5.4	57.8
September	2 723.1	2 240.6	4 963.7	189.3	290.7	5 254.4	3 666.3	8 920.7	6.5	5.5	58.9
October	2 652.3	2 293.1	4 945.4	174.2	270.9	5 216.3	3 721.6	8 937.9	6.2	5.2	58.4
November	2 698.7	2 254.9	4 953.6	173.2	261.9	5 215.4	3 739.6	8 955.0	6.0	5.0	58.2
December	2 737.6	2 290.1	5 027.7	174.4	280.0	5 307.7	3 664.5	8 972.1	6.0	5.3	59.2
2010											
January	2 693.9	2 210.8	4 904.7	203.1	297.3	5 202.1	3 790.0	8 992.1	7.0	5.7	57.9
February	2 679.7	2 275.7	4 955.5	198.9	319.8	5 275.2	3 736.8	9 012.0	6.9	6.1	58.5
March	2 672.6	2 325.2	4 997.8	184.1	301.1	5 298.8	3 733.1	9 031.9	6.4	5.7	58.7
April	2 678.3	2 313.1	4 991.4	183.0	300.7	5 292.1	3 761.9	9 054.0	6.4	5.7	58.5
PERSONS											
April 2007	7 459.6	3 016.6	10 476.3	334.4	488.8	10 965.0	5 887.3	16 852.3	4.3	4.5	65.1
April 2008	7 645.4	3 126.0	10 771.3	341.6	488.4	11 259.7	5 890.2	17 150.0	4.3	4.3	65.7
2009											
April	7 612.7	3 172.1	10 784.8	460.9	640.2	11 425.1	6 033.3	17 458.4	5.7	5.6	65.4
May	7 590.1	3 191.6	10 781.6	499.6	667.8	11 449.4	6 032.0	17 481.4	6.2	5.8	65.5
June	7 545.8	3 223.1	10 768.9	502.6	653.8	11 422.7	6 081.7	17 504.4	6.2	5.7	65.3
July	7 605.8	3 201.2	10 807.0	457.3	605.8	11 412.8	6 120.9	17 533.7	5.7	5.3	65.1
August	7 487.4	3 219.1	10 706.5	453.4	623.9	11 330.4	6 232.6	17 562.9	5.7	5.5	64.5
September	7 687.1	3 198.1	10 885.2	481.7	650.6	11 535.9	6 056.3	17 592.2	5.9	5.6	65.6
October	7 561.2	3 292.0	10 853.2	457.7	616.9	11 470.1	6 157.1	17 627.2	5.7	5.4	65.1
November	7 637.0	3 211.7	10 848.8	446.7	594.5	11 443.2	6 219.0	17 662.2	5.5	5.2	64.8
December	7 757.0	3 290.1	11 047.1	448.8	621.1	11 668.2	6 029.1	17 697.2	5.5	5.3	65.9
2010											
January	7 655.1	3 195.0	10 850.1	490.1	656.6	11 506.7	6 231.6	17 738.3	6.0	5.7	64.9
February	7 700.2	3 244.2	10 944.4	498.5	693.3	11 637.6	6 141.7	17 779.3	6.1	6.0	65.5
March	7 654.5	3 341.0	10 995.5	463.5	667.4	11 662.9	6 157.4	17 820.3	5.7	5.7	65.4
April	7 697.6	3 325.6	11 023.3	461.5	646.4	11 669.7	6 195.7	17 865.4	5.7	5.5	65.3



LABOUR FORCE STATUS (AGED 15 YEARS & OVER)—New South Wales

	TREND					SEASONALLY ADJUSTED					Civilian population aged 15 years and over
	Employed full time	Total employed	Total unemployed	Unemployment rate	Participation rate	Employed full time	Total employed	Total unemployed	Unemployment rate	Participation rate	
	'000	'000	'000	%	%	'000	'000	'000	%	%	
MALES											
April 2007	1 557.0	1 834.0	84.9	4.4	70.8	1 558.4	1 833.8	84.0	4.4	70.8	2 709.4
April 2008	1 593.2	1 878.3	85.5	4.4	71.5	1 596.7	1 876.6	90.2	4.6	71.6	2 748.3
2009											
April	1 538.6	1 839.4	126.2	6.4	70.5	1 533.4	1 838.9	120.5	6.1	70.3	2 786.9
May	1 538.8	1 841.9	126.5	6.4	70.6	1 539.1	1 838.9	130.0	6.6	70.6	2 789.8
June	1 541.2	1 846.2	124.7	6.3	70.6	1 541.6	1 841.4	126.7	6.4	70.5	2 792.7
July	1 545.0	1 850.7	122.2	6.2	70.6	1 548.0	1 863.9	122.5	6.2	71.0	2 796.5
August	1 548.9	1 854.2	120.4	6.1	70.5	1 551.3	1 853.1	119.8	6.1	70.5	2 800.3
September	1 552.4	1 856.8	119.4	6.0	70.5	1 553.4	1 857.3	108.2	5.5	70.1	2 804.1
October	1 555.6	1 859.4	119.0	6.0	70.4	1 552.8	1 857.9	123.8	6.2	70.6	2 808.9
November	1 559.2	1 862.9	118.4	6.0	70.4	1 555.6	1 857.5	121.6	6.1	70.3	2 813.6
December	1 563.6	1 867.8	117.4	5.9	70.4	1 567.5	1 868.2	122.2	6.1	70.6	2 818.4
2010											
January	1 568.4	1 873.9	115.7	5.8	70.4	1 567.1	1 872.0	115.4	5.8	70.4	2 824.0
February	1 573.2	1 880.1	113.7	5.7	70.5	1 573.3	1 887.4	106.4	5.3	70.5	2 829.6
March	1 577.6	1 885.5	111.9	5.6	70.5	1 578.1	1 882.4	112.1	5.6	70.3	2 835.2
April	1 581.4	1 890.1	109.8	5.5	70.4	1 583.4	1 892.3	112.7	5.6	70.5	2 842.7
FEMALES											
April 2007	841.5	1 488.5	88.1	5.6	55.9	833.3	1 474.0	92.9	5.9	55.6	2 819.9
April 2008	886.6	1 549.9	75.7	4.7	56.9	884.6	1 554.4	73.3	4.5	57.0	2 858.0
2009											
April	879.6	1 551.7	104.7	6.3	57.2	875.6	1 552.5	100.1	6.1	57.0	2 897.0
May	874.8	1 552.6	104.2	6.3	57.1	879.5	1 554.2	99.8	6.0	57.0	2 899.9
June	869.4	1 553.0	102.2	6.2	57.0	865.1	1 553.0	105.9	6.4	57.1	2 902.9
July	864.1	1 552.9	99.7	6.0	56.9	872.8	1 558.5	97.3	5.9	57.0	2 906.6
August	859.5	1 552.8	97.6	5.9	56.7	854.1	1 548.0	100.3	6.1	56.6	2 910.3
September	854.9	1 552.9	95.8	5.8	56.6	849.8	1 550.4	90.4	5.5	56.3	2 914.1
October	850.6	1 553.4	93.9	5.7	56.4	851.4	1 553.3	98.0	5.9	56.6	2 919.0
November	847.0	1 554.6	91.9	5.6	56.3	852.9	1 556.6	93.2	5.6	56.4	2 924.0
December	844.6	1 556.2	90.7	5.5	56.2	843.8	1 555.8	89.5	5.4	56.2	2 928.9
2010											
January	843.4	1 557.7	90.2	5.5	56.1	847.4	1 559.5	88.6	5.4	56.2	2 934.6
February	843.1	1 558.9	90.4	5.5	56.1	825.8	1 556.3	88.4	5.4	55.9	2 940.4
March	843.8	1 559.9	91.2	5.5	56.1	847.0	1 560.5	89.1	5.4	56.0	2 946.1
April	845.1	1 560.6	91.9	5.6	56.0	856.4	1 561.5	98.8	6.0	56.2	2 952.9
PERSONS											
April 2007	2 398.5	3 322.5	173.0	5.0	63.2	2 391.7	3 307.7	176.9	5.1	63.0	5 529.3
April 2008	2 479.8	3 428.2	161.2	4.5	64.0	2 481.3	3 431.0	163.4	4.5	64.1	5 606.3
2009											
April	2 418.2	3 391.1	230.9	6.4	63.7	2 409.0	3 391.4	220.5	6.1	63.5	5 683.9
May	2 413.6	3 394.5	230.7	6.4	63.7	2 418.6	3 393.1	229.8	6.3	63.7	5 689.7
June	2 410.7	3 399.1	226.9	6.3	63.7	2 406.8	3 394.4	232.5	6.4	63.7	5 695.5
July	2 409.1	3 403.7	221.9	6.1	63.6	2 420.9	3 422.4	219.8	6.0	63.9	5 703.1
August	2 408.4	3 407.0	218.0	6.0	63.5	2 405.4	3 401.1	220.1	6.1	63.4	5 710.6
September	2 407.4	3 409.7	215.3	5.9	63.4	2 403.2	3 407.7	198.6	5.5	63.1	5 718.1
October	2 406.2	3 412.7	212.8	5.9	63.3	2 404.2	3 411.3	221.8	6.1	63.4	5 727.9
November	2 406.3	3 417.5	210.3	5.8	63.2	2 408.6	3 414.1	214.7	5.9	63.2	5 737.6
December	2 408.2	3 423.9	208.2	5.7	63.2	2 411.3	3 424.0	211.7	5.8	63.3	5 747.3
2010											
January	2 411.8	3 431.6	206.0	5.7	63.2	2 414.5	3 431.5	204.0	5.6	63.1	5 758.7
February	2 416.4	3 438.9	204.1	5.6	63.1	2 399.2	3 443.7	194.7	5.4	63.1	5 770.0
March	2 421.4	3 445.3	203.1	5.6	63.1	2 425.1	3 443.0	201.2	5.5	63.0	5 781.3
April	2 426.4	3 450.7	201.7	5.5	63.1	2 439.8	3 453.8	211.5	5.8	63.2	5 795.6

LABOUR FORCE STATUS (AGED 15 YEARS & OVER)—Victoria

	TREND					SEASONALLY ADJUSTED					Civilian population aged 15 years and over
	Employed full time	Total employed	Total unemployed	Unemployment rate	Participation rate	Employed full time	Total employed	Total unemployed	Unemployment rate	Participation rate	
	'000	'000	'000	%	%	'000	'000	'000	%	%	
MALES											
April 2007	1 211.5	1 434.3	63.6	4.2	72.7	1 210.8	1 434.0	63.0	4.2	72.6	2 060.8
April 2008	1 223.3	1 462.6	60.9	4.0	72.6	1 217.3	1 458.3	62.9	4.1	72.5	2 099.3
2009											
April	1 193.6	1 441.0	91.6	6.0	71.6	1 205.5	1 446.1	87.3	5.7	71.7	2 139.3
May	1 191.2	1 441.3	95.6	6.2	71.7	1 179.6	1 440.6	96.7	6.3	71.8	2 142.2
June	1 191.2	1 442.9	98.4	6.4	71.8	1 191.8	1 440.4	101.0	6.6	71.9	2 145.2
July	1 193.4	1 446.3	99.3	6.4	71.9	1 196.8	1 444.2	100.6	6.5	71.9	2 149.1
August	1 197.4	1 451.9	97.7	6.3	72.0	1 196.4	1 455.8	102.0	6.5	72.4	2 153.0
September	1 202.4	1 460.2	94.0	6.0	72.0	1 200.3	1 452.6	90.5	5.9	71.5	2 156.9
October	1 207.8	1 470.2	89.2	5.7	72.1	1 203.6	1 471.6	90.1	5.8	72.2	2 161.9
November	1 212.7	1 480.1	85.2	5.4	72.2	1 224.9	1 482.3	85.7	5.5	72.4	2 166.9
December	1 216.9	1 488.2	83.0	5.3	72.3	1 213.2	1 485.9	77.8	5.0	72.0	2 171.9
2010											
January	1 220.8	1 494.3	82.7	5.2	72.4	1 219.7	1 505.5	79.9	5.0	72.8	2 177.8
February	1 224.3	1 498.5	83.4	5.3	72.4	1 222.4	1 498.5	83.6	5.3	72.5	2 183.6
March	1 227.6	1 501.4	84.8	5.3	72.5	1 227.1	1 496.5	88.7	5.6	72.4	2 189.5
April	1 230.2	1 502.4	86.1	5.4	72.4	1 234.3	1 499.7	88.2	5.6	72.3	2 196.2
FEMALES											
April 2007	641.8	1 173.4	65.5	5.3	57.7	636.7	1 179.6	65.3	5.2	58.0	2 145.9
April 2008	643.4	1 200.6	61.2	4.8	57.8	645.4	1 203.0	65.6	5.2	58.1	2 183.7
2009											
April	643.3	1 207.4	71.2	5.6	57.6	642.0	1 195.3	71.1	5.6	57.0	2 221.7
May	646.6	1 209.4	70.9	5.5	57.6	651.9	1 212.3	70.9	5.5	57.7	2 224.6
June	649.2	1 213.1	70.1	5.5	57.6	649.9	1 214.2	68.9	5.4	57.6	2 227.4
July	651.1	1 218.2	69.3	5.4	57.7	651.5	1 224.4	63.9	5.0	57.7	2 231.1
August	652.9	1 224.6	69.4	5.4	57.9	651.5	1 219.7	73.6	5.7	57.9	2 234.9
September	654.8	1 231.0	70.3	5.4	58.1	657.3	1 227.5	69.4	5.4	57.9	2 238.6
October	657.4	1 236.6	71.3	5.4	58.3	647.4	1 234.9	73.1	5.6	58.3	2 243.4
November	660.5	1 241.1	71.8	5.5	58.4	666.0	1 249.2	68.4	5.2	58.6	2 248.2
December	663.7	1 244.4	71.6	5.4	58.4	667.8	1 245.4	73.5	5.6	58.5	2 253.1
2010											
January	666.5	1 246.7	70.9	5.4	58.3	666.2	1 249.9	73.7	5.6	58.6	2 258.6
February	668.8	1 248.1	69.9	5.3	58.2	664.0	1 238.6	68.8	5.3	57.7	2 264.2
March	670.6	1 249.2	68.9	5.2	58.1	675.3	1 252.0	67.8	5.1	58.1	2 269.7
April	672.3	1 249.8	67.8	5.1	58.0	670.2	1 251.3	66.6	5.1	57.9	2 275.4
PERSONS											
April 2007	1 853.3	2 607.7	129.1	4.7	65.1	1 847.5	2 613.6	128.3	4.7	65.2	4 206.7
April 2008	1 866.8	2 663.2	122.1	4.4	65.0	1 862.7	2 661.3	128.5	4.6	65.1	4 283.0
2009											
April	1 836.8	2 648.4	162.8	5.8	64.5	1 847.4	2 641.3	158.4	5.7	64.2	4 360.9
May	1 837.9	2 650.7	166.5	5.9	64.5	1 831.5	2 652.9	167.6	5.9	64.6	4 366.8
June	1 840.4	2 656.0	168.5	6.0	64.6	1 841.7	2 654.6	169.9	6.0	64.6	4 372.7
July	1 844.5	2 664.5	168.6	6.0	64.7	1 848.3	2 668.7	164.5	5.8	64.7	4 380.3
August	1 850.3	2 676.5	167.1	5.9	64.8	1 847.9	2 675.5	175.6	6.2	65.0	4 387.9
September	1 857.3	2 691.1	164.2	5.8	65.0	1 857.6	2 680.2	159.9	5.6	64.6	4 395.5
October	1 865.2	2 706.7	160.4	5.6	65.1	1 850.9	2 706.4	163.3	5.7	65.1	4 405.3
November	1 873.2	2 721.1	156.9	5.5	65.2	1 890.9	2 731.6	154.2	5.3	65.4	4 415.2
December	1 880.6	2 732.7	154.7	5.4	65.2	1 881.0	2 731.2	151.3	5.3	65.1	4 425.0
2010											
January	1 887.3	2 740.9	153.6	5.3	65.2	1 885.9	2 755.4	153.6	5.3	65.6	4 436.4
February	1 893.1	2 746.6	153.4	5.3	65.2	1 886.4	2 737.1	152.4	5.3	65.0	4 447.8
March	1 898.2	2 750.6	153.7	5.3	65.2	1 902.4	2 748.4	156.6	5.4	65.1	4 459.2
April	1 902.5	2 752.2	153.9	5.3	65.1	1 904.5	2 751.0	154.8	5.3	65.0	4 471.6

LABOUR FORCE STATUS (AGED 15 YEARS & OVER)—Queensland

	TREND					SEASONALLY ADJUSTED					Civilian population aged 15 years and over
	Employed full time	Total employed	Total unemp-loyed	Unemp-loyment rate	Partici-pation rate	Employed full time	Total employed	Total unemp-loyed	Unemp-loyment rate	Partici-pation rate	
	'000	'000	'000	%	%	'000	'000	'000	%	%	
MALES											
April 2007	1 017.1	1 179.4	39.4	3.2	74.3	1 015.5	1 179.1	38.7	3.2	74.2	1 640.5
April 2008	1 018.1	1 190.9	39.9	3.2	73.4	1 021.4	1 189.0	42.0	3.4	73.4	1 677.5
2009											
April	1 031.8	1 202.7	70.7	5.6	74.1	1 036.0	1 203.5	69.0	5.4	74.1	1 718.0
May	1 030.0	1 201.5	73.3	5.8	74.1	1 029.9	1 201.8	75.5	5.9	74.2	1 721.1
June	1 028.8	1 200.9	75.3	5.9	74.0	1 026.1	1 190.3	76.3	6.0	73.5	1 724.3
July	1 027.3	1 200.8	76.6	6.0	73.9	1 025.9	1 204.2	79.3	6.2	74.3	1 727.9
August	1 025.6	1 201.6	77.4	6.1	73.9	1 027.9	1 205.0	71.4	5.6	73.7	1 731.5
September	1 023.4	1 202.5	77.6	6.1	73.8	1 027.5	1 205.8	78.8	6.1	74.0	1 735.1
October	1 021.5	1 203.3	77.3	6.0	73.6	1 022.3	1 202.3	79.6	6.2	73.7	1 738.9
November	1 021.0	1 204.5	76.7	6.0	73.5	1 018.1	1 202.1	76.4	6.0	73.4	1 742.8
December	1 022.6	1 206.7	75.7	5.9	73.4	1 017.8	1 204.9	77.9	6.1	73.4	1 746.7
2010											
January	1 026.1	1 210.5	74.5	5.8	73.4	1 022.5	1 210.0	70.2	5.5	73.1	1 751.4
February	1 030.9	1 215.3	73.1	5.7	73.4	1 032.2	1 213.0	75.2	5.8	73.4	1 756.0
March	1 036.0	1 220.3	71.8	5.6	73.4	1 041.3	1 221.7	72.0	5.6	73.5	1 760.7
April	1 041.0	1 225.1	70.8	5.5	73.5	1 044.6	1 231.8	69.8	5.4	73.7	1 765.3
FEMALES											
April 2007	558.1	975.6	42.7	4.2	60.6	562.3	978.2	38.1	3.7	60.5	1 679.5
April 2008	561.3	1 000.0	44.5	4.3	60.9	555.8	1 000.9	43.7	4.2	60.9	1 714.4
2009											
April	575.1	1 024.5	49.0	4.6	61.3	580.4	1 025.2	48.1	4.5	61.2	1 752.4
May	572.5	1 021.4	51.3	4.8	61.1	568.4	1 023.4	51.2	4.8	61.2	1 755.2
June	569.0	1 018.6	54.0	5.0	61.0	573.8	1 018.1	52.1	4.9	60.9	1 758.0
July	565.7	1 017.0	57.3	5.3	61.0	566.6	1 012.8	56.7	5.3	60.7	1 761.8
August	564.0	1 017.1	60.5	5.6	61.0	552.7	1 018.2	57.8	5.4	60.9	1 765.5
September	564.2	1 019.0	63.0	5.8	61.2	564.4	1 016.9	70.2	6.5	61.4	1 769.2
October	566.0	1 022.1	64.1	5.9	61.3	570.6	1 025.9	62.1	5.7	61.4	1 773.0
November	568.4	1 026.0	63.7	5.8	61.3	568.6	1 019.2	66.0	6.1	61.1	1 776.7
December	570.3	1 029.9	62.5	5.7	61.3	570.8	1 037.7	62.3	5.7	61.8	1 780.5
2010											
January	571.2	1 033.2	61.3	5.6	61.3	571.3	1 031.5	58.8	5.4	61.1	1 785.0
February	571.1	1 036.0	60.7	5.5	61.3	575.1	1 036.0	59.3	5.4	61.2	1 789.5
March	570.7	1 038.5	60.4	5.5	61.3	565.6	1 038.2	60.0	5.5	61.2	1 793.9
April	570.2	1 040.2	60.9	5.5	61.3	570.8	1 040.8	64.1	5.8	61.4	1 799.1
PERSONS											
April 2007	1 575.2	2 155.0	82.0	3.7	67.4	1 577.8	2 157.3	76.8	3.4	67.3	3 320.0
April 2008	1 579.4	2 190.9	84.4	3.7	67.1	1 577.2	2 190.0	85.7	3.8	67.1	3 392.0
2009											
April	1 607.0	2 227.2	119.7	5.1	67.6	1 616.4	2 228.7	117.1	5.0	67.6	3 470.5
May	1 602.5	2 222.9	124.7	5.3	67.5	1 598.3	2 225.2	126.7	5.4	67.7	3 476.4
June	1 597.7	2 219.5	129.3	5.5	67.4	1 599.8	2 208.4	128.3	5.5	67.1	3 482.3
July	1 593.0	2 217.9	133.9	5.7	67.4	1 592.5	2 217.1	136.0	5.8	67.4	3 489.6
August	1 589.5	2 218.7	138.0	5.9	67.4	1 580.6	2 223.3	129.1	5.5	67.3	3 497.0
September	1 587.6	2 221.5	140.6	6.0	67.4	1 591.9	2 222.7	149.0	6.3	67.7	3 504.3
October	1 587.5	2 225.4	141.4	6.0	67.4	1 593.0	2 228.2	141.7	6.0	67.5	3 511.9
November	1 589.5	2 230.5	140.4	5.9	67.4	1 586.7	2 221.3	142.4	6.0	67.2	3 519.5
December	1 592.9	2 236.6	138.2	5.8	67.3	1 588.6	2 242.6	140.2	5.9	67.6	3 527.2
2010											
January	1 597.3	2 243.7	135.8	5.7	67.3	1 593.8	2 241.4	129.0	5.4	67.0	3 536.3
February	1 602.1	2 251.4	133.8	5.6	67.3	1 607.3	2 248.9	134.5	5.6	67.2	3 545.5
March	1 606.7	2 258.8	132.2	5.5	67.3	1 606.9	2 259.9	132.0	5.5	67.3	3 554.6
April	1 611.2	2 265.3	131.6	5.5	67.3	1 615.3	2 272.5	133.9	5.6	67.5	3 564.4

LABOUR FORCE STATUS (AGED 15 YEARS & OVER)—South Australia

	TREND					SEASONALLY ADJUSTED					Civilian population aged 15 years and over '000
	Employed full time	Total employed	Total unemp-loyed	Unemp-loyment rate	Partici-pation rate	Employed full time	Total employed	Total unemp-loyed	Unemp-loyment rate	Partici-pation rate	
	'000	'000	'000	%	%	'000	'000	'000	%	%	
MALES											
April 2007	345.2	412.9	22.8	5.2	68.9	342.0	413.3	22.5	5.2	68.9	632.1
April 2008	357.2	429.8	20.8	4.6	70.4	357.8	431.9	20.5	4.5	70.7	639.8
2009											
April	353.0	421.6	27.4	6.1	69.4	359.6	422.2	27.1	6.0	69.4	647.3
May	350.0	421.0	27.6	6.2	69.2	353.5	422.7	26.7	5.9	69.4	647.9
June	347.1	421.1	27.7	6.2	69.2	346.6	421.8	26.7	5.9	69.2	648.5
July	344.7	421.8	27.7	6.2	69.2	339.0	420.3	28.1	6.3	69.1	649.1
August	343.5	423.1	27.6	6.1	69.4	337.9	419.0	28.0	6.3	68.8	649.7
September	343.9	425.4	27.0	6.0	69.6	352.0	430.3	28.3	6.2	70.5	650.3
October	346.0	428.4	25.8	5.7	69.8	344.9	427.3	25.0	5.5	69.5	651.1
November	348.9	431.4	24.3	5.3	69.9	346.0	429.7	25.9	5.7	69.9	651.9
December	351.3	433.8	23.0	5.0	70.0	352.8	432.8	23.0	5.0	69.8	652.7
2010											
January	353.0	435.3	22.3	4.9	70.0	353.5	441.3	18.2	4.0	70.3	653.7
February	354.3	436.1	22.2	4.8	70.0	357.3	436.0	21.9	4.8	70.0	654.6
March	355.0	436.3	22.4	4.9	70.0	354.5	435.2	23.9	5.2	70.0	655.6
April	355.9	436.4	22.9	5.0	70.0	353.3	433.4	24.8	5.4	69.8	656.7
FEMALES											
April 2007	176.4	350.2	17.3	4.7	55.7	175.8	349.6	18.5	5.0	55.8	660.0
April 2008	186.2	357.4	17.9	4.8	56.2	185.5	356.5	19.4	5.1	56.3	667.7
2009											
April	184.9	371.3	19.7	5.1	57.9	186.6	376.0	19.0	4.8	58.5	675.1
May	185.4	372.3	19.2	4.9	57.9	185.6	374.0	18.9	4.8	58.1	675.6
June	184.8	372.0	19.0	4.9	57.8	185.0	371.7	18.9	4.9	57.8	676.2
July	183.6	370.7	19.1	4.9	57.6	185.1	370.9	19.1	4.9	57.6	676.8
August	182.2	368.9	19.5	5.0	57.3	178.6	364.4	20.2	5.2	56.8	677.4
September	181.0	367.2	19.7	5.1	57.1	184.0	368.8	19.6	5.1	57.3	678.0
October	180.4	366.2	19.9	5.1	56.9	178.4	368.7	19.2	5.0	57.2	678.8
November	180.6	365.8	19.9	5.2	56.8	180.0	366.0	20.3	5.3	56.9	679.5
December	181.2	365.6	19.9	5.2	56.7	180.8	359.6	21.3	5.6	56.0	680.3
2010											
January	182.1	365.6	20.1	5.2	56.6	182.8	368.1	19.4	5.0	56.9	681.2
February	183.0	365.5	20.4	5.3	56.6	183.5	367.9	18.3	4.7	56.6	682.1
March	183.7	365.4	20.9	5.4	56.6	184.2	365.4	21.8	5.6	56.7	683.0
April	184.5	365.3	21.3	5.5	56.6	184.1	364.0	22.6	5.9	56.5	684.0
PERSONS											
April 2007	521.7	763.1	40.1	5.0	62.2	517.9	762.9	41.0	5.1	62.2	1 292.1
April 2008	543.4	787.2	38.7	4.7	63.2	543.3	788.4	39.8	4.8	63.3	1 307.5
2009											
April	537.9	792.9	47.2	5.6	63.5	546.1	798.3	46.1	5.5	63.8	1 322.5
May	535.4	793.3	46.8	5.6	63.5	539.1	796.6	45.5	5.4	63.6	1 323.6
June	531.9	793.2	46.7	5.6	63.4	531.6	793.5	45.6	5.4	63.3	1 324.7
July	528.3	792.5	46.8	5.6	63.3	524.1	791.2	47.1	5.6	63.2	1 325.9
August	525.7	792.1	47.1	5.6	63.2	516.5	783.4	48.2	5.8	62.7	1 327.1
September	524.9	792.7	46.7	5.6	63.2	536.0	799.0	48.0	5.7	63.8	1 328.3
October	526.4	794.6	45.6	5.4	63.2	523.3	796.0	44.2	5.3	63.2	1 329.9
November	529.4	797.2	44.2	5.2	63.2	526.0	795.7	46.2	5.5	63.2	1 331.4
December	532.5	799.4	43.0	5.1	63.2	533.6	792.5	44.3	5.3	62.8	1 332.9
2010											
January	535.1	800.9	42.4	5.0	63.2	536.2	809.4	37.6	4.4	63.5	1 334.8
February	537.2	801.6	42.6	5.0	63.2	540.8	804.0	40.2	4.8	63.2	1 336.7
March	538.7	801.7	43.2	5.1	63.1	538.7	800.6	45.7	5.4	63.2	1 338.6
April	540.5	801.7	44.2	5.2	63.1	537.4	797.4	47.4	5.6	63.0	1 340.7

	TREND					SEASONALLY ADJUSTED					Civilian population aged 15 years and over
	Employed full time	Total employed	Total unemployed	Unemployment rate	Participation rate	Employed full time	Total employed	Total unemployed	Unemployment rate	Participation rate	
	'000	'000	'000	%	%	'000	'000	'000	%	%	'000
MALES											
April 2007	533.7	620.6	17.2	2.7	75.7	533.2	620.2	14.7	2.3	75.4	842.2
April 2008	556.9	640.2	20.1	3.0	76.2	553.9	636.5	20.7	3.1	75.8	866.9
2009											
April	554.8	652.8	32.8	4.8	76.8	558.4	654.6	31.3	4.6	76.8	893.3
May	551.1	652.1	35.0	5.1	76.7	553.7	659.6	34.1	4.9	77.5	895.3
June	548.3	651.7	36.5	5.3	76.7	550.9	651.9	35.9	5.2	76.7	897.2
July	546.7	651.9	37.1	5.4	76.6	539.8	643.4	39.6	5.8	75.9	899.7
August	546.7	652.6	36.8	5.3	76.4	545.1	653.7	36.3	5.3	76.5	902.1
September	548.3	654.4	35.8	5.2	76.3	548.5	655.9	37.1	5.4	76.6	904.5
October	551.4	657.0	34.6	5.0	76.2	552.4	658.4	33.7	4.9	76.3	907.4
November	555.0	660.0	33.5	4.8	76.2	557.8	658.8	32.6	4.7	76.0	910.3
December	558.4	662.8	32.8	4.7	76.2	557.8	663.7	31.4	4.5	76.1	913.1
2010											
January	561.0	665.1	32.5	4.7	76.1	560.8	665.3	32.0	4.6	76.1	916.4
February	563.3	667.3	32.2	4.6	76.1	563.6	667.1	34.2	4.9	76.3	919.6
March	565.5	669.3	31.9	4.5	76.0	563.9	669.0	33.7	4.8	76.1	922.8
April	567.2	671.0	31.7	4.5	76.0	569.5	672.3	29.0	4.1	75.8	925.2
FEMALES											
April 2007	253.0	485.3	16.9	3.4	60.0	250.9	478.6	16.0	3.2	59.1	837.4
April 2008	271.9	501.4	17.9	3.4	60.5	268.4	503.4	18.1	3.5	60.8	857.9
2009											
April	272.2	511.5	26.5	4.9	61.2	274.4	509.2	26.2	4.9	60.9	878.8
May	270.1	510.2	27.6	5.1	61.1	277.5	513.4	27.7	5.1	61.5	880.3
June	267.7	508.0	28.3	5.3	60.8	264.7	508.6	27.3	5.1	60.8	881.9
July	265.7	505.6	28.9	5.4	60.5	257.2	504.8	28.9	5.4	60.4	883.9
August	264.7	503.6	29.6	5.6	60.2	265.2	505.6	29.5	5.5	60.4	885.9
September	264.5	502.9	30.2	5.7	60.0	268.1	496.8	32.5	6.1	59.6	887.9
October	265.0	503.7	30.5	5.7	60.0	266.4	503.5	27.6	5.2	59.7	890.2
November	265.7	505.7	30.5	5.7	60.1	265.8	506.9	31.4	5.8	60.3	892.5
December	266.2	508.1	30.1	5.6	60.1	265.6	509.1	31.8	5.9	60.5	894.8
2010											
January	266.4	509.9	29.7	5.5	60.1	264.6	509.4	29.4	5.5	60.0	897.3
February	267.0	510.9	29.3	5.4	60.0	266.6	513.8	28.1	5.2	60.2	899.9
March	267.8	511.3	28.9	5.3	59.9	269.2	513.4	28.5	5.3	60.0	902.4
April	268.7	510.9	28.8	5.3	59.7	269.9	505.3	29.3	5.5	59.1	905.0
PERSONS											
April 2007	786.7	1 105.9	34.1	3.0	67.9	784.1	1 098.8	30.8	2.7	67.3	1 679.6
April 2008	828.7	1 141.6	37.9	3.2	68.4	822.3	1 139.9	38.8	3.3	68.3	1 724.8
2009											
April	827.1	1 164.3	59.3	4.8	69.1	832.8	1 163.9	57.5	4.7	68.9	1 772.1
May	821.3	1 162.3	62.6	5.1	69.0	831.2	1 173.0	61.8	5.0	69.5	1 775.6
June	816.0	1 159.7	64.8	5.3	68.8	815.7	1 160.4	63.2	5.2	68.8	1 779.1
July	812.5	1 157.5	66.0	5.4	68.6	797.1	1 148.1	68.5	5.6	68.2	1 783.6
August	811.4	1 156.2	66.4	5.4	68.4	810.3	1 159.3	65.7	5.4	68.5	1 788.0
September	812.9	1 157.2	66.0	5.4	68.2	816.6	1 152.6	69.6	5.7	68.2	1 792.4
October	816.4	1 160.7	65.1	5.3	68.2	818.8	1 161.9	61.2	5.0	68.0	1 797.6
November	820.8	1 165.8	63.9	5.2	68.2	823.6	1 165.7	64.0	5.2	68.2	1 802.7
December	824.5	1 170.9	62.9	5.1	68.2	823.5	1 172.8	63.2	5.1	68.4	1 807.9
2010											
January	827.4	1 175.0	62.1	5.0	68.2	825.4	1 174.7	61.4	5.0	68.2	1 813.7
February	830.3	1 178.2	61.5	5.0	68.1	830.2	1 180.9	62.3	5.0	68.3	1 819.5
March	833.3	1 180.6	60.8	4.9	68.1	833.2	1 182.4	62.2	5.0	68.2	1 825.3
April	835.9	1 181.9	60.5	4.9	68.0	839.4	1 177.7	58.3	4.7	67.5	1 830.2

	TREND					SEASONALLY ADJUSTED					Civilian population aged 15 years and over
	Employed full time	Total employed	Total unemployed	Unemployment rate	Participation rate	Employed full time	Total employed	Total unemployed	Unemployment rate	Participation rate	
	'000	'000	'000	%	%	'000	'000	'000	%	%	
MALES											
April 2007	103.9	124.2	6.5	5.0	67.7	103.6	123.8	7.2	5.5	67.9	193.1
April 2008	108.2	128.2	4.7	3.5	68.1	108.4	128.8	3.7	2.8	67.9	195.3
2009											
April	104.4	126.9	6.5	4.9	67.6	104.0	125.5	7.2	5.4	67.2	197.4
May	103.7	125.7	6.6	5.0	67.0	103.4	125.8	7.4	5.5	67.4	197.6
June	103.2	124.8	6.6	5.0	66.4	102.5	125.1	6.3	4.8	66.5	197.7
July	102.9	124.0	6.7	5.1	66.0	103.5	124.0	5.2	4.0	65.3	198.0
August	102.8	123.6	6.9	5.3	65.8	103.0	123.1	7.0	5.4	65.6	198.2
September	102.7	123.4	7.2	5.5	65.8	103.2	124.1	7.7	5.9	66.4	198.5
October	102.5	123.3	7.5	5.7	65.8	102.0	122.9	8.2	6.3	66.0	198.7
November	102.2	123.4	7.8	5.9	65.9	102.8	123.1	7.5	5.8	65.6	198.9
December	102.0	123.6	7.9	6.0	66.0	101.3	123.7	7.7	5.9	66.0	199.1
2010											
January	102.0	123.8	8.0	6.0	66.1	102.1	124.2	7.3	5.5	65.9	199.4
February	101.9	124.0	8.1	6.1	66.2	101.8	124.2	8.8	6.6	66.6	199.6
March	102.0	124.1	8.2	6.2	66.2	102.1	123.9	8.2	6.2	66.1	199.8
April	102.0	124.3	8.3	6.3	66.3	102.2	124.2	8.3	6.3	66.3	200.1
FEMALES											
April 2007	51.6	102.2	5.5	5.1	53.1	51.1	102.5	5.4	5.0	53.2	203.0
April 2008	54.2	105.8	6.1	5.4	54.6	54.7	107.0	6.0	5.3	55.1	205.0
2009											
April	54.5	108.9	5.8	5.1	55.4	53.3	106.9	7.4	6.4	55.2	207.1
May	54.3	109.1	5.7	5.0	55.4	54.0	107.8	6.3	5.5	55.0	207.3
June	54.1	109.3	5.6	4.9	55.4	54.9	109.5	5.1	4.5	55.3	207.5
July	53.9	109.5	5.5	4.8	55.4	55.1	112.2	4.8	4.1	56.4	207.6
August	53.8	109.6	5.4	4.7	55.3	52.5	108.4	5.6	4.9	54.9	207.8
September	53.7	109.5	5.3	4.7	55.2	53.3	109.9	5.8	5.0	55.6	208.0
October	53.3	109.2	5.4	4.8	55.1	53.4	109.0	5.3	4.6	54.9	208.2
November	53.0	109.1	5.7	4.9	55.1	54.8	108.6	5.7	5.0	54.9	208.4
December	52.8	109.5	5.9	5.1	55.3	51.6	109.1	5.4	4.7	54.9	208.6
2010											
January	52.6	110.2	6.1	5.2	55.7	52.4	109.4	5.9	5.1	55.2	208.8
February	52.6	110.9	6.2	5.3	56.1	51.9	111.6	7.6	6.4	57.0	209.0
March	52.6	111.7	6.4	5.4	56.5	53.0	112.3	5.7	4.8	56.4	209.2
April	52.7	112.4	6.5	5.5	56.8	53.5	112.7	6.5	5.4	56.9	209.4
PERSONS											
April 2007	155.5	226.4	12.1	5.1	60.2	154.7	226.4	12.7	5.3	60.3	396.1
April 2008	162.5	234.0	10.7	4.4	61.2	163.1	235.9	9.7	4.0	61.4	400.3
2009											
April	159.0	235.8	12.4	5.0	61.3	157.2	232.4	14.6	5.9	61.0	404.6
May	157.9	234.8	12.3	5.0	61.0	157.4	233.6	13.6	5.5	61.1	404.9
June	157.2	234.1	12.2	5.0	60.8	157.4	234.6	11.5	4.7	60.7	405.2
July	156.9	233.5	12.2	5.0	60.6	158.6	236.3	9.9	4.0	60.7	405.6
August	156.7	233.2	12.3	5.0	60.5	155.5	231.5	12.6	5.2	60.1	406.1
September	156.4	232.9	12.5	5.1	60.4	156.4	234.0	13.5	5.5	60.9	406.5
October	155.8	232.5	12.9	5.3	60.3	155.4	231.9	13.5	5.5	60.3	406.9
November	155.2	232.5	13.4	5.5	60.4	157.5	231.7	13.2	5.4	60.1	407.3
December	154.8	233.1	13.8	5.6	60.5	152.9	232.7	13.1	5.3	60.3	407.7
2010											
January	154.6	234.0	14.0	5.7	60.7	154.5	233.5	13.1	5.3	60.4	408.2
February	154.5	234.9	14.3	5.7	61.0	153.7	235.7	16.3	6.5	61.7	408.6
March	154.6	235.8	14.6	5.8	61.2	155.1	236.2	13.9	5.6	61.1	409.1
April	154.7	236.7	14.8	5.9	61.5	155.6	236.9	14.8	5.9	61.5	409.5

	TREND					<i>Civilian population aged 15 years and over</i>
	<i>Employed full time</i>	<i>Total employed</i>	<i>Total unemployed</i>	<i>Unemployment rate</i>	<i>Participation rate</i>	
	'000	'000	'000	%	%	
MALES						
April 2007	49.8	58.0	2.9	4.8	76.1	80.0
April 2008	51.6	60.4	2.4	3.8	76.3	82.2
2009						
April	57.8	64.6	3.1	4.5	80.3	84.3
May	57.9	64.9	3.1	4.6	80.6	84.4
June	57.8	65.0	3.1	4.6	80.6	84.5
July	57.6	65.1	3.1	4.5	80.3	84.8
August	57.5	65.2	2.9	4.3	80.1	85.1
September	57.5	65.3	2.7	4.0	79.8	85.4
October	57.6	65.5	2.5	3.7	79.5	85.5
November	57.7	65.6	2.3	3.5	79.3	85.7
December	57.9	65.7	2.2	3.3	79.1	85.8
2010						
January	58.0	65.7	2.1	3.1	78.8	86.0
February	58.0	65.7	2.0	3.0	78.5	86.2
March	58.1	65.7	2.0	2.9	78.3	86.4
April	58.1	65.6	2.0	2.9	78.1	86.7
FEMALES						
April 2007	35.1	48.9	1.9	3.7	65.7	77.3
April 2008	36.6	52.3	2.0	3.8	68.6	79.1
2009						
April	39.5	54.9	1.9	3.3	70.0	81.1
May	39.5	54.8	1.9	3.4	69.8	81.2
June	39.1	54.4	2.0	3.5	69.2	81.4
July	38.7	54.0	2.0	3.5	68.6	81.6
August	38.4	53.8	2.0	3.6	68.2	81.8
September	38.4	53.9	2.0	3.6	68.2	82.0
October	38.7	54.3	2.0	3.5	68.5	82.2
November	39.0	54.7	2.0	3.5	68.8	82.3
December	39.1	54.9	2.0	3.5	68.9	82.5
2010						
January	38.9	54.7	2.0	3.5	68.5	82.7
February	38.5	54.4	2.0	3.5	67.9	82.9
March	38.0	53.9	2.0	3.5	67.3	83.1
April	37.5	53.5	2.0	3.5	66.6	83.4
PERSONS						
April 2007	85.0	106.9	4.8	4.3	71.0	157.3
April 2008	88.1	112.6	4.4	3.8	72.6	161.3
2009						
April	97.3	119.5	4.9	4.0	75.3	165.4
May	97.4	119.7	5.1	4.1	75.3	165.6
June	96.9	119.4	5.1	4.1	75.0	165.9
July	96.3	119.1	5.0	4.1	74.6	166.4
August	96.0	119.0	4.9	4.0	74.2	166.9
September	95.9	119.2	4.7	3.8	74.1	167.4
October	96.2	119.8	4.5	3.6	74.1	167.7
November	96.7	120.3	4.3	3.5	74.2	168.0
December	97.0	120.6	4.2	3.3	74.1	168.3
2010						
January	96.9	120.4	4.1	3.3	73.8	168.7
February	96.5	120.0	4.0	3.2	73.3	169.1
March	96.1	119.6	3.9	3.2	72.9	169.6
April	95.7	119.1	3.9	3.2	72.4	170.1

	TREND					<i>Civilian population aged 15 years and over</i>
	<i>Employed full time</i>	<i>Total employed</i>	<i>Total unemployed</i>	<i>Unemployment rate</i>	<i>Participation rate</i>	
	'000	'000	'000	%	%	
MALES						
April 2007	85.8	101.3	3.3	3.1	79.2	132.0
April 2008	85.3	101.5	2.9	2.8	77.9	134.1
2009						
April	86.0	100.6	3.5	3.4	76.5	136.1
May	85.5	100.2	3.8	3.7	76.4	136.2
June	85.1	100.0	4.1	3.9	76.3	136.4
July	84.8	100.0	4.2	4.0	76.4	136.4
August	84.8	100.1	4.3	4.1	76.4	136.5
September	85.0	100.3	4.3	4.1	76.5	136.6
October	85.3	100.7	4.4	4.2	76.8	136.9
November	85.7	101.3	4.5	4.2	77.1	137.1
December	86.1	101.8	4.5	4.3	77.4	137.3
2010						
January	86.3	102.2	4.5	4.2	77.5	137.7
February	86.4	102.5	4.4	4.1	77.5	138.0
March	86.4	102.7	4.3	4.1	77.4	138.3
April	86.4	102.7	4.3	4.0	77.3	138.6
FEMALES						
April 2007	60.1	92.1	2.7	2.9	68.2	139.0
April 2008	60.9	94.3	2.5	2.6	68.7	140.8
2009						
April	61.0	93.8	2.9	3.0	67.8	142.4
May	61.0	93.5	3.0	3.1	67.7	142.6
June	60.8	93.4	3.1	3.2	67.6	142.7
July	60.7	93.3	3.1	3.2	67.5	142.8
August	60.9	93.4	3.0	3.1	67.5	142.9
September	61.2	93.6	3.0	3.1	67.5	142.9
October	61.4	93.9	3.0	3.1	67.7	143.1
November	61.5	94.3	3.1	3.1	67.9	143.4
December	61.5	95.0	3.1	3.1	68.3	143.6
2010						
January	61.4	95.7	3.0	3.1	68.6	143.9
February	61.3	96.5	2.9	2.9	69.0	144.1
March	61.1	97.2	2.8	2.8	69.3	144.4
April	61.1	97.9	2.6	2.6	69.5	144.7
PERSONS						
April 2007	145.9	193.4	6.0	3.0	73.6	271.0
April 2008	146.2	195.8	5.4	2.7	73.2	274.9
2009						
April	147.0	194.3	6.4	3.2	72.1	278.5
May	146.4	193.8	6.8	3.4	71.9	278.8
June	145.9	193.4	7.1	3.6	71.9	279.1
July	145.5	193.3	7.3	3.6	71.8	279.2
August	145.6	193.4	7.3	3.6	71.8	279.4
September	146.1	193.8	7.3	3.6	71.9	279.5
October	146.7	194.6	7.4	3.7	72.1	280.0
November	147.3	195.6	7.5	3.7	72.4	280.4
December	147.6	196.8	7.6	3.7	72.7	280.9
2010						
January	147.7	198.0	7.5	3.7	73.0	281.5
February	147.7	199.0	7.3	3.6	73.2	282.1
March	147.6	199.9	7.1	3.4	73.3	282.7
April	147.5	200.7	6.9	3.3	73.3	283.3



Original—April 2010

	EMPLOYED			UNEMPLOYED			UNEMPLOYMENT RATE			Participation rate	
	Full time	Part time	Total	Looking for f/t work	Total	Labour force	Not in labour force	Civilian population aged 15 years and over	Looking for f/t work		Total
	'000	'000	'000	'000	'000	'000	'000	'000	%		%
MALES											
New South Wales	1 582.1	316.4	1 898.4	90.0	114.0	2 012.4	830.3	2 842.7	5.4	5.7	70.8
Victoria	1 231.7	271.2	1 502.9	73.4	92.0	1 594.9	601.2	2 196.2	5.6	5.8	72.6
Queensland	1 043.0	190.4	1 233.4	60.2	71.6	1 305.0	460.3	1 765.3	5.5	5.5	73.9
South Australia	350.0	81.9	431.9	20.0	25.9	457.7	199.0	656.7	5.4	5.6	69.7
Western Australia	567.9	104.9	672.8	23.8	28.1	700.9	224.3	925.2	4.0	4.0	75.8
Tasmania	100.6	23.8	124.4	6.5	8.1	132.5	67.6	200.1	6.1	6.1	66.2
Northern Territory	58.9	7.6	66.5	1.7	2.0	68.4	18.2	86.7	2.8	2.9	79.0
Australian Capital Territory	85.0	16.5	101.5	2.7	4.1	105.6	33.0	138.6	3.1	3.9	76.2
<b>Australia</b>	<b>5 019.3</b>	<b>1 012.5</b>	<b>6 031.9</b>	<b>278.5</b>	<b>345.7</b>	<b>6 377.6</b>	<b>2 433.9</b>	<b>8 811.4</b>	<b>5.3</b>	<b>5.4</b>	<b>72.4</b>
FEMALES											
New South Wales	850.0	718.6	1 568.6	60.9	98.7	1 667.3	1 285.6	2 952.9	6.7	5.9	56.5
Victoria	663.2	589.1	1 252.3	40.8	71.0	1 323.3	952.1	2 275.4	5.8	5.4	58.2
Queensland	563.6	473.5	1 037.1	42.6	65.4	1 102.4	696.7	1 799.1	7.0	5.9	61.3
South Australia	182.7	180.0	362.7	12.8	23.7	386.5	297.5	684.0	6.6	6.1	56.5
Western Australia	267.2	238.4	505.6	19.5	31.1	536.7	368.3	905.0	6.8	5.8	59.3
Tasmania	52.5	62.0	114.5	3.6	5.7	120.1	89.3	209.4	6.4	4.7	57.4
Northern Territory	37.1	15.7	52.8	1.3	2.3	55.1	28.4	83.4	3.3	4.1	66.0
Australian Capital Territory	62.1	35.7	97.8	*1.6	2.9	100.7	44.0	144.7	*2.5	2.8	69.6
<b>Australia</b>	<b>2 678.3</b>	<b>2 313.1</b>	<b>4 991.4</b>	<b>183.0</b>	<b>300.7</b>	<b>5 292.1</b>	<b>3 761.9</b>	<b>9 054.0</b>	<b>6.4</b>	<b>5.7</b>	<b>58.5</b>
PERSONS											
New South Wales	2 432.1	1 035.0	3 467.1	150.9	212.7	3 679.8	2 115.9	5 795.6	5.8	5.8	63.5
Victoria	1 894.9	860.3	2 755.2	114.2	163.0	2 918.3	1 553.3	4 471.6	5.7	5.6	65.3
Queensland	1 606.5	663.9	2 270.4	102.8	137.0	2 407.5	1 156.9	3 564.4	6.0	5.7	67.5
South Australia	532.7	261.9	794.6	32.9	49.6	844.2	496.5	1 340.7	5.8	5.9	63.0
Western Australia	835.1	343.3	1 178.4	43.3	59.2	1 237.5	592.6	1 830.2	4.9	4.8	67.6
Tasmania	153.1	85.8	238.9	10.1	13.7	252.6	156.8	409.5	6.2	5.4	61.7
Northern Territory	96.0	23.2	119.3	3.0	4.2	123.5	46.6	170.1	3.0	3.4	72.6
Australian Capital Territory	147.1	52.2	199.4	4.3	6.9	206.3	77.0	283.3	2.8	3.4	72.8
<b>Australia</b>	<b>7 697.6</b>	<b>3 325.6</b>	<b>11 023.3</b>	<b>461.5</b>	<b>646.4</b>	<b>11 669.7</b>	<b>6 195.7</b>	<b>17 865.4</b>	<b>5.7</b>	<b>5.5</b>	<b>65.3</b>

\* estimate is subject to sampling variability too high for most practical purposes

	EMPLOYED		UNEMPLOYED		UNEMPLOYMENT RATE		Participation rate	Employment to population ratio	Unemployment to population ratio – looking for full-time work
	Full time	Total	Looking for f/t work	Total	Looking for f/t work	Total			
	'000	'000	'000	'000	%	%			
MALES									
April 2007	159.9	367.2	30.8	57.5	16.2	13.6	57.8	50.0	4.2
April 2008	175.3	388.2	28.2	54.1	13.8	12.2	59.1	51.9	3.8
2009									
April	141.3	348.4	43.8	77.9	23.6	18.3	56.4	46.1	5.8
May	138.0	345.3	43.7	78.7	24.0	18.6	56.1	45.7	5.8
June	135.8	343.3	42.8	78.3	23.9	18.6	55.7	45.4	5.7
July	134.8	342.7	41.8	77.5	23.6	18.4	55.5	45.2	5.5
August	134.7	343.3	41.2	76.6	23.4	18.2	55.4	45.3	5.4
September	134.7	344.6	40.8	75.6	23.2	18.0	55.3	45.4	5.4
October	134.7	345.5	40.3	74.7	23.0	17.8	55.3	45.4	5.3
November	134.8	345.8	40.1	74.4	22.9	17.7	55.2	45.4	5.3
December	134.8	345.2	40.1	74.6	22.9	17.8	55.1	45.3	5.3
2010									
January	134.9	344.2	40.4	75.2	23.0	17.9	55.0	45.1	5.3
February	135.6	343.7	40.7	75.8	23.1	18.1	54.9	45.0	5.3
March	136.6	343.9	41.1	76.3	23.1	18.2	55.0	45.0	5.4
April	137.8	344.1	41.7	76.8	23.2	18.2	55.0	45.0	5.4
FEMALES									
April 2007	85.6	370.2	23.5	56.4	21.5	13.2	61.0	53.0	3.4
April 2008	89.4	372.5	24.4	56.9	21.5	13.2	60.4	52.4	3.4
2009									
April	81.2	356.4	29.5	64.0	26.7	15.2	58.4	49.5	4.1
May	81.7	354.0	30.0	65.0	26.9	15.5	58.2	49.2	4.2
June	81.1	351.9	30.2	65.1	27.1	15.6	57.9	48.8	4.2
July	79.9	351.0	30.2	64.8	27.5	15.6	57.6	48.6	4.2
August	79.1	351.9	30.3	64.2	27.7	15.4	57.6	48.7	4.2
September	79.1	354.4	30.0	63.4	27.5	15.2	57.7	49.0	4.1
October	79.8	357.3	29.6	62.7	27.0	14.9	57.9	49.3	4.1
November	80.5	359.7	29.0	62.2	26.5	14.7	58.1	49.5	4.0
December	80.5	361.2	28.4	62.3	26.1	14.7	58.2	49.7	3.9
2010									
January	79.9	361.8	27.7	62.5	25.7	14.7	58.3	49.7	3.8
February	78.9	362.0	27.1	62.7	25.6	14.8	58.3	49.7	3.7
March	77.7	362.0	26.7	63.1	25.6	14.8	58.2	49.6	3.7
April	76.3	361.5	26.5	63.7	25.8	15.0	58.2	49.5	3.6
PERSONS									
April 2007	245.5	737.4	54.3	113.9	18.1	13.4	59.4	51.4	3.8
April 2008	264.8	760.7	52.6	110.9	16.6	12.7	59.8	52.2	3.6
2009									
April	222.6	704.8	73.3	141.9	24.8	16.8	57.4	47.8	5.0
May	219.7	699.3	73.7	143.7	25.1	17.1	57.1	47.4	5.0
June	216.9	695.2	72.9	143.4	25.2	17.1	56.8	47.1	4.9
July	214.8	693.7	72.1	142.3	25.1	17.0	56.5	46.9	4.9
August	213.7	695.2	71.5	140.8	25.0	16.8	56.4	46.9	4.8
September	213.8	698.9	70.9	139.0	24.9	16.6	56.5	47.1	4.8
October	214.6	702.8	69.9	137.4	24.6	16.4	56.6	47.3	4.7
November	215.3	705.5	69.1	136.6	24.3	16.2	56.6	47.4	4.6
December	215.3	706.5	68.5	136.9	24.1	16.2	56.6	47.4	4.6
2010									
January	214.8	706.1	68.1	137.7	24.1	16.3	56.6	47.4	4.6
February	214.4	705.7	67.8	138.5	24.0	16.4	56.6	47.3	4.5
March	214.3	705.8	67.8	139.4	24.0	16.5	56.6	47.2	4.5
April	214.1	705.6	68.1	140.5	24.1	16.6	56.6	47.2	4.6

	EMPLOYED		UNEMPLOYED		UNEMPLOYMENT RATE		Participation rate	Employment to population ratio	Unemployment to population ratio – looking for full-time work
	Full time	Total	Looking for f/t work	Total	Looking for f/t work	Total			
	'000	'000	'000	'000	%	%			
MALES									
April 2007	163.3	370.5	29.8	54.9	15.4	12.9	57.9	50.4	4.1
April 2008	168.7	387.7	30.1	54.1	15.1	12.2	59.1	51.8	4.0
2009									
April	142.5	345.7	39.2	76.6	21.6	18.1	55.9	45.8	5.2
May	140.1	349.4	44.5	79.4	24.1	18.5	56.7	46.2	5.9
June	137.9	347.6	42.0	74.7	23.3	17.7	55.8	46.0	5.6
July	129.9	331.7	48.3	85.3	27.1	20.4	55.1	43.8	6.4
August	133.2	343.5	35.1	73.4	20.9	17.6	55.0	45.3	4.6
September	137.0	344.2	40.2	73.9	22.7	17.7	55.0	45.3	5.3
October	135.8	353.3	38.7	71.7	22.2	16.9	55.9	46.5	5.1
November	136.8	346.3	45.3	77.7	24.9	18.3	55.7	45.5	6.0
December	137.3	343.3	40.3	76.1	22.7	18.1	55.0	45.0	5.3
2010									
January	126.7	343.7	38.8	73.6	23.4	17.6	54.7	45.1	5.1
February	136.5	341.9	36.1	72.4	20.9	17.5	54.3	44.8	4.7
March	138.1	340.3	44.0	80.2	24.2	19.1	55.0	44.5	5.8
April	140.9	351.0	43.7	76.5	23.7	17.9	55.8	45.8	5.7
FEMALES									
April 2007	87.7	373.8	20.8	54.0	19.2	12.6	61.2	53.5	3.0
April 2008	85.9	373.2	27.4	60.0	24.2	13.9	60.9	52.5	3.9
2009									
April	88.0	354.9	29.8	61.7	25.3	14.8	57.9	49.3	4.1
May	81.3	354.3	29.4	61.5	26.5	14.8	57.8	49.2	4.1
June	77.8	350.1	32.1	72.8	29.2	17.2	58.7	48.6	4.5
July	81.4	348.2	30.3	62.7	27.1	15.2	56.9	48.3	4.2
August	79.3	352.2	27.2	63.2	25.5	15.2	57.5	48.7	3.8
September	74.3	352.5	30.8	63.1	29.3	15.2	57.4	48.7	4.3
October	81.4	360.3	31.0	60.0	27.6	14.3	58.0	49.7	4.3
November	82.2	359.8	31.1	66.0	27.4	15.5	58.6	49.6	4.3
December	81.4	364.2	25.9	63.7	24.1	14.9	58.8	50.1	3.6
2010									
January	80.5	359.9	26.7	56.9	24.9	13.6	57.2	49.4	3.7
February	79.4	361.7	28.3	65.7	26.3	15.4	58.6	49.6	3.9
March	75.3	363.5	26.5	61.8	26.0	14.5	58.2	49.8	3.6
April	75.9	359.6	27.0	65.5	26.2	15.4	58.2	49.2	3.7
PERSONS									
April 2007	251.0	744.3	50.6	108.8	16.8	12.8	59.5	51.9	3.5
April 2008	254.6	760.9	57.5	114.1	18.4	13.0	60.0	52.2	3.9
2009									
April	230.5	700.6	69.0	138.2	23.0	16.5	56.9	47.5	4.7
May	221.4	703.7	73.8	140.9	25.0	16.7	57.2	47.7	5.0
June	215.7	697.8	74.1	147.5	25.6	17.5	57.2	47.2	5.0
July	211.3	679.9	78.6	147.9	27.1	17.9	56.0	46.0	5.3
August	212.5	695.7	62.3	136.6	22.7	16.4	56.2	47.0	4.2
September	211.3	696.8	71.0	137.0	25.1	16.4	56.2	47.0	4.8
October	217.2	713.5	69.7	131.7	24.3	15.6	56.9	48.0	4.7
November	219.0	706.1	76.4	143.6	25.9	16.9	57.1	47.5	5.1
December	218.8	707.5	66.1	139.8	23.2	16.5	56.9	47.5	4.4
2010									
January	207.2	703.6	65.5	130.5	24.0	15.6	55.9	47.2	4.4
February	215.8	703.6	64.4	138.1	23.0	16.4	56.4	47.1	4.3
March	213.4	703.8	70.5	141.9	24.8	16.8	56.6	47.1	4.7
April	216.9	710.5	70.6	142.0	24.6	16.7	57.0	47.5	4.7

	EMPLOYED			UNEMPLOYED			Civilian population aged 15–19 years	UNEMPLOYMENT RATE		Participation rate	Unemployment to population ratio – looking for full-time work	
	Full time	Part time	Total	Looking for f/t work	Total	Labour force		Looking for f/t work	Total			
	'000	'000	'000	'000	'000	'000		%	%			%
NOT ATTENDING FULL-TIME EDUCATION												
<b>Males</b>												
April 2007	160.9	43.6	204.5	24.2	26.7	231.1	26.1	257.3	13.1	11.5	89.8	9.4
April 2008	164.8	47.2	212.1	23.8	25.5	237.6	19.1	256.7	12.6	10.7	92.6	9.3
April 2009	139.7	48.9	188.7	31.9	34.9	223.5	26.8	250.3	18.6	15.6	89.3	12.8
April 2010	135.7	44.2	179.9	33.7	38.0	217.9	26.6	244.6	19.9	17.5	89.1	13.8
<b>Females</b>												
April 2007	78.3	55.2	133.4	19.7	24.7	158.1	24.0	182.1	20.1	15.6	86.8	10.8
April 2008	76.9	60.1	137.0	23.7	25.4	162.5	25.8	188.3	23.5	15.6	86.3	12.6
April 2009	81.2	46.8	128.0	27.4	32.3	160.3	40.0	200.3	25.2	20.2	80.0	13.7
April 2010	67.6	64.2	131.8	23.8	28.4	160.2	28.6	188.8	26.0	17.7	84.8	12.6
<b>Persons</b>												
April 2007	239.1	98.8	337.9	43.9	51.3	389.2	50.1	439.3	15.5	13.2	88.6	10.0
April 2008	241.7	107.4	349.1	47.4	50.9	400.0	44.9	445.0	16.4	12.7	89.9	10.7
April 2009	221.0	95.7	316.6	59.3	67.2	383.8	66.8	450.7	21.2	17.5	85.2	13.2
April 2010	203.3	108.4	311.7	57.5	66.4	378.1	55.3	433.4	22.1	17.6	87.2	13.3
ATTENDING FULL-TIME EDUCATION												
<b>Males</b>												
April 2007	7.4	164.7	172.1	*3.9	27.3	199.4	278.3	477.7	*34.4	13.7	41.7	*0.8
April 2008	9.5	173.5	183.0	*4.6	27.5	210.5	280.6	491.1	*32.5	13.1	42.9	*0.9
April 2009	*7.6	156.4	164.0	*5.3	40.3	204.3	300.6	505.0	*40.8	19.7	40.5	*1.0
April 2010	10.1	168.1	178.2	7.8	37.0	215.2	305.8	521.0	43.6	17.2	41.3	1.5
<b>Females</b>												
April 2007	7.3	232.6	239.9	*2.1	31.6	271.5	245.7	517.2	*22.7	11.6	52.5	*0.4
April 2008	6.7	229.1	235.8	*5.3	38.1	274.0	248.7	522.6	*44.0	13.9	52.4	*1.0
April 2009	*4.1	222.4	226.5	*4.2	33.7	260.2	258.8	519.0	*50.7	13.0	50.1	*0.8
April 2010	*5.9	221.3	227.2	*4.8	42.1	269.3	272.7	541.9	*44.6	15.6	49.7	*0.9
<b>Persons</b>												
April 2007	14.7	397.3	412.0	6.0	58.9	470.9	524.0	994.9	29.1	12.5	47.3	0.6
April 2008	16.2	402.6	418.8	9.9	65.6	484.5	529.3	1 013.8	37.8	13.5	47.8	1.0
April 2009	11.7	378.8	390.6	9.5	74.0	464.6	559.4	1 024.0	44.7	15.9	45.4	0.9
April 2010	16.0	389.3	405.4	12.6	79.1	484.5	578.5	1 062.9	44.0	16.3	45.6	1.2
TOTAL												
<b>Males</b>												
April 2007	168.3	208.3	376.6	28.1	54.0	430.6	304.4	735.0	14.3	12.5	58.6	3.8
April 2008	174.3	220.7	395.0	28.3	53.0	448.1	299.7	747.8	14.0	11.8	59.9	3.8
April 2009	147.4	205.3	352.7	37.2	75.2	427.9	327.4	755.3	20.2	17.6	56.6	4.9
April 2010	145.8	212.3	358.0	41.6	75.1	433.1	332.4	765.6	22.2	17.3	56.6	5.4
<b>Females</b>												
April 2007	85.6	287.7	373.3	21.8	56.3	429.6	269.7	699.3	20.3	13.1	61.4	3.1
April 2008	83.6	289.3	372.9	28.9	63.5	436.4	274.5	710.9	25.7	14.6	61.4	4.1
April 2009	85.3	269.2	354.5	31.6	66.0	420.5	298.8	719.3	27.0	15.7	58.5	4.4
April 2010	73.5	285.5	359.0	28.5	70.4	429.5	301.3	730.7	28.0	16.4	58.8	3.9
<b>Persons</b>												
April 2007	253.8	496.1	749.9	49.9	110.2	860.2	574.1	1 434.3	16.4	12.8	60.0	3.5
April 2008	258.0	510.0	767.9	57.3	116.6	884.5	574.2	1 458.7	18.2	13.2	60.6	3.9
April 2009	232.7	474.5	707.2	68.8	141.2	848.4	626.3	1 474.7	22.8	16.6	57.5	4.7
April 2010	219.3	497.8	717.1	70.1	145.5	862.6	633.7	1 496.3	24.2	16.9	57.6	4.7

\* estimate is subject to sampling variability too high for most practical purposes

	EMPLOYED			UNEMPLOYED		Labour force	Not in labour force	Civilian population aged 15–19 years	UNEMPLOYMENT RATE		Participation rate	Unemployment to population ratio – looking for full-time work
	Full time	Part time	Total	Looking for f/t work	Total				Looking for f/t work	Total		
	'000	'000	'000	'000	'000				'000	'000		
NOT ATTENDING FULL-TIME EDUCATION												
New South Wales	60.0	39.2	99.2	16.4	19.5	118.7	17.9	136.6	21.4	16.4	86.9	12.0
Victoria	33.8	18.6	52.5	9.0	10.8	63.2	9.3	72.5	20.9	17.0	87.2	12.4
Queensland	54.2	24.1	78.3	17.1	18.2	96.5	12.0	108.5	24.0	18.8	88.9	15.8
South Australia	12.6	9.8	22.4	4.5	5.9	28.3	3.6	31.9	26.3	21.0	88.7	14.1
Western Australia	31.3	12.3	43.6	8.4	9.4	53.0	7.5	60.6	21.2	17.8	87.6	13.9
Tasmania	5.6	2.0	7.6	*1.3	*1.3	8.9	1.7	10.5	*18.5	*14.4	84.1	*12.1
Northern Territory	3.9	1.3	5.2	*0.2	*0.3	5.5	2.0	7.5	*3.9	*4.7	73.2	*2.2
Australian Capital Territory	1.8	*1.1	2.9	*0.7	*1.1	4.0	*1.3	5.2	*28.3	*26.9	75.7	*13.8
<b>Australia</b>	<b>203.3</b>	<b>108.4</b>	<b>311.7</b>	<b>57.5</b>	<b>66.4</b>	<b>378.1</b>	<b>55.3</b>	<b>433.4</b>	<b>22.1</b>	<b>17.6</b>	<b>87.2</b>	<b>13.3</b>
ATTENDING FULL-TIME EDUCATION												
New South Wales	*4.1	109.0	113.1	*2.8	21.6	134.6	208.1	342.7	*40.8	16.0	39.3	*0.8
Victoria	*2.9	106.1	109.0	*3.2	24.9	133.9	159.2	293.1	*52.6	18.6	45.7	*1.1
Queensland	*4.2	84.5	88.7	*3.4	16.3	104.9	99.1	204.1	*44.6	15.5	51.4	*1.7
South Australia	*1.1	28.5	29.6	*1.0	7.6	37.2	38.6	75.8	*49.1	20.5	49.0	*1.4
Western Australia	*1.8	39.6	41.4	*1.5	5.6	47.0	49.0	96.0	*45.8	11.9	49.0	*1.6
Tasmania	*1.1	9.6	10.8	*0.2	*1.4	12.1	12.2	24.4	*15.3	*11.4	49.9	*0.9
Northern Territory	*0.1	4.0	4.1	*0.1	*0.6	4.7	4.1	8.8	*49.3	*12.0	53.0	*1.1
Australian Capital Territory	*0.8	8.0	8.8	*0.4	*1.2	10.0	8.0	18.0	*32.0	*12.1	55.4	*2.1
<b>Australia</b>	<b>16.0</b>	<b>389.3</b>	<b>405.4</b>	<b>12.6</b>	<b>79.1</b>	<b>484.5</b>	<b>578.5</b>	<b>1 062.9</b>	<b>44.0</b>	<b>16.3</b>	<b>45.6</b>	<b>1.2</b>
TOTAL												
New South Wales	64.1	148.3	212.3	19.2	41.0	253.4	226.0	479.3	23.0	16.2	52.9	4.0
Victoria	36.7	124.7	161.5	12.2	35.7	197.2	168.5	365.7	24.9	18.1	53.9	3.3
Queensland	58.4	108.6	167.0	20.5	34.5	201.4	111.1	312.5	26.0	17.1	64.4	6.6
South Australia	13.6	38.3	52.0	5.5	13.5	65.5	42.2	107.7	28.8	20.7	60.8	5.1
Western Australia	33.1	51.9	85.0	9.9	15.1	100.0	56.5	156.6	23.0	15.0	63.9	6.3
Tasmania	6.8	11.6	18.4	*1.5	2.7	21.0	13.9	34.9	*18.0	12.7	60.2	*4.3
Northern Territory	4.0	5.3	9.3	*0.3	*0.8	10.1	6.1	16.3	*5.9	*8.1	62.3	*1.6
Australian Capital Territory	2.6	9.1	11.7	*1.1	2.3	14.0	9.3	23.3	*29.5	16.3	60.0	*4.7
<b>Australia</b>	<b>219.3</b>	<b>497.8</b>	<b>717.1</b>	<b>70.1</b>	<b>145.5</b>	<b>862.6</b>	<b>633.7</b>	<b>1 496.3</b>	<b>24.2</b>	<b>16.9</b>	<b>57.6</b>	<b>4.7</b>

\* estimate is subject to sampling variability too high for most practical purposes

LABOUR FORCE STATUS IN APRIL 2010

<i>Labour force status in March 2010</i>	<i>Employed Full time</i> '000	<i>Employed Part time</i> '000	<i>Employed Total</i> '000	<i>Unemployed</i> '000	<i>Labour Force</i> '000	<i>Not in Labour Force</i> '000	<i>Matched Civilian Population</i> '000
MALES							
Employed Full time	3 912	119	4 032	27	4 059	45	4 104
Employed Part time	138	614	752	20	772	62	835
Employed Total	4 050	734	4 783	48	4 831	107	4 938
Unemployed Total	33	34	67	165	232	52	284
Labour Force	4 083	768	4 850	213	5 063	159	5 223
Not in Labour Force	34	53	87	57	144	1 723	1 867
Matched Civilian Population	4 116	821	4 937	270	5 208	1 882	7 090
FEMALES							
Employed Full time	1 967	180	2 148	9	2 157	36	2 193
Employed Part time	176	1 627	1 802	26	1 828	114	1 942
Employed Total	2 143	1 807	3 950	35	3 985	151	4 135
Unemployed Total	15	36	51	127	178	66	244
Labour Force	2 158	1 843	4 001	162	4 163	217	4 380
Not in Labour Force	30	78	108	73	181	2 690	2 871
Matched Civilian Population	2 188	1 921	4 109	234	4 344	2 907	7 251
PERSONS							
Employed Full time	5 880	300	6 179	37	6 216	81	6 297
Employed Part time	314	2 241	2 554	46	2 600	177	2 777
Employed Total	6 193	2 540	8 734	82	8 816	258	9 074
Unemployed Total	48	70	118	293	410	118	529
Labour Force	6 241	2 611	8 851	375	9 226	376	9 602
Not in Labour Force	64	132	195	130	325	4 413	4 738
Matched Civilian Population	6 304	2 743	9 047	505	9 551	4 789	14 340

(a) Gross flows figures do not match published labour force estimates. Refer to gross flows in Glossary.

## AGGREGATE MONTHLY HOURS WORKED

	TREND			SEASONALLY ADJUSTED		
	Full time	Part time	Total	Full time	Part time	Total
	millions	millions	millions	millions	millions	millions
MALES						
April 2007	870.8	59.3	930.1	868.2	60.3	928.5
April 2008	891.4	62.7	954.1	895.3	61.6	956.9
2009						
April	864.6	64.2	928.8	866.6	65.6	932.2
May	862.5	64.8	927.3	859.1	64.9	924.0
June	861.9	65.3	927.2	868.9	62.9	931.7
July	862.8	65.7	928.5	858.0	65.4	923.3
August	864.5	66.3	930.8	862.5	67.2	929.8
September	866.8	67.1	934.0	869.5	67.8	937.2
October	869.8	68.0	937.8	868.5	67.6	936.1
November	873.0	68.6	941.6	875.3	68.5	943.8
December	875.9	68.9	944.9	877.3	68.8	946.1
2010						
January	878.3	69.0	947.3	870.2	69.8	940.0
February	880.1	69.0	949.1	889.7	69.6	959.3
March	881.5	68.9	950.4	880.8	68.5	949.2
April	882.6	68.8	951.3	879.5	67.9	947.4
FEMALES						
April 2007	421.3	147.5	568.8	420.2	149.2	569.4
April 2008	436.4	153.3	589.7	436.8	154.2	591.0
2009						
April	434.6	155.0	589.6	438.2	153.9	592.0
May	433.2	155.4	588.6	433.4	154.0	587.4
June	431.5	156.2	587.6	432.4	157.3	589.7
July	430.3	157.1	587.4	431.3	157.2	588.5
August	429.7	157.9	587.6	422.4	158.5	580.9
September	429.3	158.6	587.9	429.7	158.5	588.3
October	429.1	159.1	588.2	431.5	159.4	590.9
November	428.9	159.5	588.4	433.9	159.2	593.1
December	428.4	159.9	588.3	430.3	158.9	589.2
2010						
January	427.7	160.2	587.8	416.9	160.0	576.9
February	427.0	160.3	587.3	429.9	162.6	592.5
March	426.6	160.2	586.8	430.0	160.5	590.4
April	426.4	160.0	586.4	426.2	157.8	584.0
PERSONS						
April 2007	1 292.1	206.9	1 499.0	1 288.4	209.4	1 497.8
April 2008	1 327.8	216.0	1 543.8	1 332.0	215.8	1 547.9
2009						
April	1 299.2	219.2	1 518.4	1 304.8	219.4	1 524.2
May	1 295.7	220.2	1 515.9	1 292.5	218.9	1 511.5
June	1 293.4	221.4	1 514.8	1 301.3	220.1	1 521.4
July	1 293.1	222.8	1 515.9	1 289.2	222.6	1 511.8
August	1 294.2	224.2	1 518.5	1 285.0	225.7	1 510.7
September	1 296.1	225.7	1 521.9	1 299.2	226.3	1 525.5
October	1 298.9	227.1	1 526.0	1 300.0	227.0	1 527.0
November	1 301.9	228.2	1 530.0	1 309.2	227.6	1 536.8
December	1 304.3	228.8	1 533.1	1 307.6	227.8	1 535.3
2010						
January	1 305.9	229.2	1 535.1	1 287.1	229.8	1 516.9
February	1 307.1	229.3	1 536.4	1 319.6	232.2	1 551.9
March	1 308.1	229.1	1 537.2	1 310.7	229.0	1 539.7
April	1 309.0	228.7	1 537.7	1 305.7	225.7	1 531.4

	TREND			SEASONALLY ADJUSTED			ORIGINAL		
	<i>Under-employed workers</i>	<i>Under-employment rate</i>	<i>Labour force under-utilisation rate</i>	<i>Under-employed workers</i>	<i>Under-employment rate</i>	<i>Labour force under-utilisation rate</i>	<i>Under-employed workers</i>	<i>Under-employment rate</i>	<i>Labour force under-utilisation rate</i>
	'000	%	%	'000	%	%	'000	%	%
MALES									
February 2006	283.8	4.9	9.8	280.2	4.8	9.9	290.2	4.9	10.5
February 2007	287.1	4.8	9.0	295.1	5.0	9.2	307.3	5.1	9.8
February 2008	268.1	4.4	8.3	270.8	4.5	8.1	283.7	4.6	8.6
2008									
August	263.3	4.3	8.2	251.8	4.1	7.9	246.0	4.0	7.6
November	295.0	4.8	9.2	292.3	4.8	8.9	284.7	4.6	8.5
2009									
February	342.2	5.5	10.7	338.5	5.5	10.8	354.6	5.7	11.5
May	379.2	6.1	12.0	400.9	6.4	12.5	401.9	6.5	12.7
August	386.6	6.2	12.1	377.2	6.1	12.0	368.3	6.0	11.6
November	378.9	6.0	11.8	383.4	6.1	11.9	370.5	5.9	11.3
2010									
February	368.2	5.8	11.3	362.3	5.8	11.1	379.9	6.0	11.8
FEMALES									
February 2006	432.5	9.0	14.0	433.9	9.1	14.2	446.4	9.3	15.2
February 2007	413.6	8.4	13.2	413.9	8.4	13.4	427.8	8.6	14.4
February 2008	399.2	7.9	12.5	392.1	7.8	12.1	406.5	8.0	13.1
2008									
August	415.4	8.1	12.8	406.8	8.0	12.5	388.9	7.7	11.9
November	444.6	8.6	13.5	435.3	8.5	13.4	434.3	8.5	12.9
2009									
February	473.7	9.1	14.4	500.6	9.6	14.9	519.5	9.9	16.1
May	494.9	9.5	15.1	474.1	9.1	14.6	477.7	9.1	14.5
August	503.7	9.7	15.3	512.6	9.9	15.6	490.8	9.5	14.9
November	509.6	9.8	15.3	511.5	9.8	15.3	512.7	9.8	14.9
2010									
February	515.0	9.9	15.2	510.3	9.8	14.9	530.4	10.1	16.1
PERSONS									
February 2006	716.3	6.7	11.7	714.1	6.7	11.8	736.6	6.9	12.6
February 2007	700.6	6.4	10.9	708.9	6.5	11.1	735.1	6.7	11.9
February 2008	667.3	6.0	10.2	662.9	6.0	9.9	690.2	6.2	10.6
2008									
August	678.7	6.0	10.3	658.6	5.9	10.0	634.9	5.7	9.6
November	739.6	6.5	11.2	727.6	6.4	11.0	719.0	6.4	10.5
2009									
February	815.9	7.2	12.4	839.1	7.4	12.7	874.1	7.6	13.6
May	874.2	7.7	13.4	875.0	7.7	13.5	879.6	7.7	13.5
August	890.3	7.8	13.6	889.8	7.8	13.6	859.1	7.6	13.1
November	888.6	7.7	13.4	894.9	7.8	13.4	883.2	7.7	12.9
2010									
February	883.2	7.7	13.0	872.6	7.6	12.8	910.3	7.8	13.8

(a) Seasonally adjusted and trend data are compiled using estimates only from the quarter months (i.e. February, May, August and November), and therefore may differ from the official monthly estimates produced in *Labour Force, Australia* (cat. no. 6202.0).



—February 2010

	TREND			SEASONALLY ADJUSTED			ORIGINAL		
	Under-employed workers	Under-employment rate	Labour force under-utilisation rate	Under-employed workers	Under-employment rate	Labour force under-utilisation rate	Under-employed workers	Under-employment rate	Labour force under-utilisation rate
	'000	%	%	'000	%	%	'000	%	%
MALES									
New South Wales	114.7	5.8	11.4	116.0	5.8	11.2	116.0	5.8	11.5
Victoria	92.3	5.9	11.2	97.2	6.2	11.5	107.9	6.8	12.5
Queensland	81.2	6.4	12.3	73.2	5.7	11.7	80.9	6.2	13.0
South Australia	28.6	6.3	11.4	28.3	6.2	11.1	28.3	6.1	11.3
Western Australia	34.0	4.9	9.8	33.7	4.8	9.8	33.9	4.8	10.3
Tasmania	6.8	5.2	11.5	6.6	5.0	11.7	6.2	4.7	11.9
Northern Territory	1.7	2.6	5.9	1.5	2.2	5.5	1.6	2.4	6.2
Australian Capital Territory	4.5	4.2	8.7	4.6	4.3	9.2	5.0	4.7	9.8
<b>Australia</b>	<b>368.2</b>	<b>5.8</b>	<b>11.3</b>	<b>362.3</b>	<b>5.8</b>	<b>11.1</b>	<b>379.9</b>	<b>6.0</b>	<b>11.8</b>
FEMALES									
New South Wales	167.1	10.2	15.8	171.3	10.5	15.9	182.0	11.0	17.3
Victoria	131.4	10.0	15.2	125.5	9.6	14.7	124.8	9.5	15.5
Queensland	106.8	9.8	15.6	101.6	9.2	14.6	106.2	9.7	16.0
South Australia	40.3	10.5	15.4	41.0	10.6	15.4	43.3	11.1	16.5
Western Australia	49.5	9.2	14.7	48.6	9.0	14.2	49.9	9.1	15.1
Tasmania	10.6	9.1	14.8	11.5	9.8	15.9	12.3	10.4	17.9
Northern Territory	2.9	5.3	7.8	2.8	5.0	7.6	3.2	5.9	8.8
Australian Capital Territory	7.1	7.1	10.4	7.8	7.8	11.2	8.6	8.6	12.4
<b>Australia</b>	<b>515.0</b>	<b>9.9</b>	<b>15.2</b>	<b>510.3</b>	<b>9.8</b>	<b>14.9</b>	<b>530.4</b>	<b>10.1</b>	<b>16.1</b>
PERSONS									
New South Wales	281.7	7.8	13.4	287.3	7.9	13.3	298.1	8.2	14.1
Victoria	223.7	7.7	13.0	222.7	7.7	13.0	232.7	8.0	13.9
Queensland	188.0	7.9	13.8	174.8	7.3	13.0	187.1	7.8	14.4
South Australia	68.9	8.2	13.3	69.4	8.2	13.1	71.6	8.4	13.7
Western Australia	83.4	6.7	11.9	82.3	6.6	11.7	83.8	6.7	12.4
Tasmania	17.4	7.0	13.1	18.1	7.3	13.7	18.6	7.4	14.8
Northern Territory	4.7	3.8	6.8	4.3	3.5	6.5	4.8	4.0	7.4
Australian Capital Territory	11.6	5.6	9.5	12.4	6.0	10.1	13.6	6.5	11.1
<b>Australia</b>	<b>883.2</b>	<b>7.7</b>	<b>13.0</b>	<b>872.6</b>	<b>7.6</b>	<b>12.8</b>	<b>910.3</b>	<b>7.8</b>	<b>13.8</b>

(a) Seasonally adjusted and trend data are compiled using estimates only from the quarter months (i.e. February, May, August and November), and therefore may differ from the official monthly estimates produced in *Labour Force, Australia* (cat. no. 6202.0).

# WHAT IF...? REVISIONS TO TREND ESTIMATES

## EFFECT OF NEW SEASONALLY ADJUSTED ESTIMATES ON TREND ESTIMATES

### TREND REVISIONS

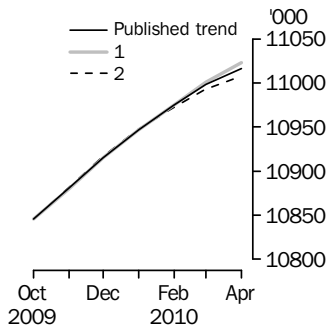
Each time new seasonally adjusted estimates become available, trend estimates are revised. This revision is a combined result of the concurrent seasonal adjustment process and the application of surrogates of the Henderson average to the seasonally adjusted series (see paragraphs 27 to 35 of the Explanatory Notes).

The examples in the tables below show two illustrative scenarios and the consequent revisions to previous trend estimates of employment and the unemployment rate. The revisions in the scenarios are due to the use of surrogates of the Henderson average, as the impact of revision of seasonally adjusted estimates can not be estimated in advance.

- (1) The May seasonally adjusted estimate is *higher* than the April estimate by:
  - 0.24% for employment
  - 2.10% for the unemployment rate
- (2) The May seasonally adjusted estimate is *lower* than the April estimate by:
  - 0.24% for employment
  - 2.10% for the unemployment rate

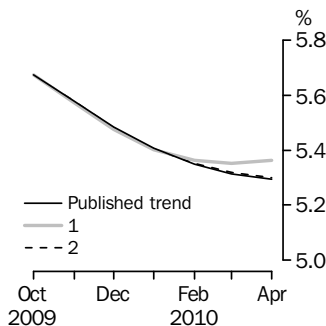
The percentage changes of 0.24% and 2.10% represent the average absolute monthly percentage changes in employment and the unemployment rate respectively. Estimates in the graphs have been calculated using unrounded estimates, and may be different from, but more accurate than, rounded estimates depicted in its corresponding table.

### EMPLOYMENT



	Trend as published	WHAT IF NEXT MONTH'S SEASONALLY ADJUSTED ESTIMATE IS:	
		(1) 11 051.9 i.e. rises by 0.24%	(2) 10 999.0 i.e. falls by 0.24%
<b>2010</b>			
January	10 947.1	10 946.9	10 947.8
February	10 974.8	10 975.2	10 972.8
March	10 998.2	11 000.5	10 992.6
April	11 016.5	11 022.8	11 008.0

### UNEMPLOYMENT RATE



	Trend as published	WHAT IF NEXT MONTH'S SEASONALLY ADJUSTED ESTIMATE IS:	
		(1) 5.5 i.e. rises by 2.10%	(2) 5.3 i.e. falls by 2.10%
<b>2010</b>			
January	5.4	5.4	5.4
February	5.3	5.4	5.4
March	5.3	5.4	5.3
April	5.3	5.4	5.3

## EXPLANATORY NOTES

### INTRODUCTION

**1** This publication contains estimates of the civilian labour force derived from the Labour Force Survey component of the Monthly Population Survey. The full time series for estimates from this publication are also available electronically. More detailed estimates are released one week after this publication in various electronic formats – see *Labour Force, Australia, Detailed – Electronic Delivery* (cat. no. 6291.0.55.001) and *Labour Force, Australia, Detailed, Quarterly* (cat. no. 6291.0.55.003).

### CONCEPTS, SOURCES AND METHODS

**2** The conceptual framework used in Australia's Labour Force Survey aligns closely with the standards and guidelines set out in Resolutions of International Conferences of Labour Statisticians. Descriptions of the underlying concepts and structure of Australia's labour force statistics, and the sources and methods used in compiling the estimates, are presented in *Labour Statistics: Concepts, Sources and Methods* (cat. no. 6102.0.55.001) which is available on the ABS website <<http://www.abs.gov.au>>.

### LABOUR FORCE SURVEY

**3** The Labour Force Survey is based on a multi-stage area sample of private dwellings (currently approximately 29,000 houses, flats, etc.) and a list sample of non-private dwellings (hotels, motels, etc.), and covers approximately 0.33% of the civilian population of Australia aged 15 years and over.

**4** Information is obtained from the occupants of selected dwellings by specially trained interviewers using computer-assisted interviewing (CAI).

**5** Households selected for the Labour Force Survey are interviewed each month for eight months, with one-eighth of the sample being replaced each month. The first interview is conducted face-to-face. Subsequent interviews are conducted by telephone (if acceptable to the respondent).

**6** The interviews are generally conducted during the two weeks beginning on the Sunday between the 5th and 11th of each month. The information obtained relates to the week before the interview (i.e. the reference week). Each year, to deal with operational difficulties involved with collecting and processing the Labour Force Survey around the Christmas and New Year holiday period, interviews for December start four weeks after November interviews start, and January interviews start five weeks after December interviews start. As a result, January interviewing may commence as early as the 7th or as late as the 13th, depending on the year. Occasionally, circumstances that present significant operational difficulties for survey collection can result in a change to the normal pattern for the start of interviewing.

**7** Estimates from the Labour Force Survey are published first in this publication 32 days after the commencement of interviews for that month, with the exception of estimates for each December which are published 39 days after the commencement of interviews.

### SCOPE OF SURVEY

**8** The Labour Force Survey includes all persons aged 15 years and over except members of the permanent defence forces, certain diplomatic personnel of overseas governments customarily excluded from census and estimated population counts, overseas residents in Australia, and members of non-Australian defence forces (and their dependants) stationed in Australia.

### COVERAGE

**9** In the Labour Force Survey, coverage rules are applied which aim to ensure that each person is associated with only one dwelling, and hence has only one chance of selection. The coverage rules are necessarily a balance between theoretical and operational considerations. Nevertheless, the chance of a person being enumerated at two separate dwellings in the survey is considered to be negligible.

### POPULATION BENCHMARKS

**10** Labour Force Survey estimates are calculated in such a way as to add up to independent estimates of the civilian population aged 15 years and over (population benchmarks). These population benchmarks are projections of the most recently released quarterly Estimated Resident Population (ERP) data. For information on the

## EXPLANATORY NOTES *continued*

### POPULATION BENCHMARKS

*continued*

methodology used to produce the ERP see *Australian Demographic Statistics* (cat. no. 3101.0). To create the population benchmarks for the Labour Force Survey, the most recently released quarterly ERP estimates are projected forward one quarter past the period for which they are required. The projection is based on the historical pattern of each population component - births, deaths, interstate migration and net overseas migration (NOM). By projecting one quarter past that needed for the current population benchmarks, demographic changes are smoothed in, thereby making them less noticeable in the population benchmarks.

**11** The ERP series are revised annually in the September quarter issue of *Australian Demographic Statistics* (cat. no. 3101.0), released in March each year, to incorporate more up to date information available for the population components. The revised ERP estimates are used to update the quarterly population projections used in creating the Labour Force Survey population benchmarks. Benchmarks already used in producing Labour Force Survey estimates are not revised. A process of smoothing is used in the creation of subsequent population benchmarks to reduce the effect of these annual revisions to ERP estimates on the Labour Force Survey population benchmarks.

**12** In the 2009 ERP revision cycle, final NOM data for the 2006–07 reference year were incorporated, detailing a large revision to ERP. To prevent the ERP revision causing an unduly large month to month movement in the labour force benchmark population, a smoothing factor is applied to gradually incorporate the revised estimates. A result of this smoothing method is that the Labour Force civilian population benchmarks will not be comparable to the ERP published in *Australian Demographic Statistics* (cat. no. 3101.0), pending the next labour force revision cycle.

**13** Every five years, the ERP series are revised to incorporate additional information available from the latest Census of Population and Housing. Following the incorporation of Census information, the ERP series prior to the latest Census are final and subject to no further revision. Labour Force Survey population benchmarks, and the estimates, are revised following this 5-yearly revision in the ERP. From the February 2009 issue of this publication, labour force estimates have been compiled using population benchmarks based on the results of the 2006 Census of Population and Housing. Revisions were made in the February 2009 issue to historical labour force estimates from June 2001 to January 2009.

### ESTIMATION METHOD

**14** The estimation method used in the Labour Force Survey is Composite Estimation, which was introduced in May 2007. Composite Estimation combines data collected in the previous six months with current month's data to produce the current month's estimates, thereby exploiting the high correlation between overlapping samples across months in the Labour Force Survey. The Composite Estimator combines the previous and current months' data by applying different factors according to length of time in the survey. After these factors are applied, the seven months of data are weighted to align with current month population benchmarks. For details see *Information Paper: Forthcoming Changes to Labour Force Statistics, 2007* (cat. no. 6292.0).

### COMPARABILITY OF SERIES

**15** From April 1986, the definition of employed persons was changed to include persons who worked without pay between 1 and 14 hours per week in a family business or on a farm (i.e. contributing family workers). For further information, see paragraphs 22 and 23 of the Explanatory Notes in the February 2003 issue of *Labour Force, Australia* (cat. no. 6203.0).

**16** The ABS introduced telephone interviewing into the Labour Force Survey in August 1996. Implementation was phased in for each new sample group from August 1996 to February 1997. During the period of implementation, the new method produced different estimates than would have been obtained under the old methodology. The effect dissipated over the final months of implementation and was no

## EXPLANATORY NOTES *continued*

### COMPARABILITY OF SERIES

*continued*

longer discernible from February 1997. The estimates for February 1997 and onwards are directly comparable to estimates for periods prior to August 1996. For further details, see the feature article in the June 1997 issue of *Labour Force, Australia* (cat. no. 6203.0).

**17** From April 2001 the Labour Force Survey has been conducted using a redesigned questionnaire containing additional data items and some minor definitional changes. The definition of unemployed persons was changed to include all persons who were waiting to start work and were available to start in the reference week. This change was introduced in February 2004, when historical unit record data were revised from April 2001 to January 2004. This revision created a small trend break at April 2001 in unemployed persons and unemployment rate series. For further details, see *Information Paper: Forthcoming Changes to Labour Force Statistics* (cat. no. 6292.0), released in December 2003.

**18** Core labour force series were revised in April 2001 for the period April 1986 to March 2001 for the remaining definitional changes introduced with the redesigned questionnaire, to reduce the impact of the changes on labour force series. For further details, see *Information Paper: Implementing the Redesigned Labour Force Survey Questionnaire* (cat. no. 6295.0) and *Information Paper: Questionnaires Used in the Labour Force Survey* (cat. no. 6232.0).

**19** In May 2007, an improved method of estimation, known as composite estimation, was introduced into the Labour Force Survey. In introducing this change, the ABS revised unit record data from April 2001 to April 2007 based on the new estimation method. While estimates for periods prior to April 2001 are unrevised and were compiled using a different estimation method, no trend break was identified in the employed persons series. Also, no change was identified in the trend breaks in the unemployed persons and unemployment rate series which arose with the introduction of a redesigned survey form in April 2001 (as noted above in paragraph 16). For further details, see *Information Paper: Forthcoming Changes to Labour Force Statistics, 2007* (cat. no. 6292.0).

### LABOUR FORCE SURVEY SAMPLE

**20** The current Labour Force Survey sample has been selected using information collected in the 2006 Census of Population and Housing.

**21** The majority of this sample was phased in over the period November 2007 to June 2008, with one-eighth of this portion of the sample being introduced every month. The remainder of the sample (about 20% of the total), which covers less settled areas of Australia and non-private dwellings was rotated in full for New South Wales, Western Australia, Northern Territory and Australian Capital Territory in March 2008, and for Victoria, Queensland, South Australia and Tasmania in April 2008. Such a pattern of implementation means that any changes to labour force estimates due to differences between the two samples, or any other influences, were spread over the eight months.

**22** As one of a range of ABS savings initiatives for the 2008–09 financial year, there was a 24% reduction in the LFS sample size for the period July 2008 to August 2009, relative to the June 2008 sample size. The sample reduction was reinstated from September 2009 to December 2009, with December 2009 estimates being the first produced under the fully reinstated sample.

**23** For further details, see *Information Paper: Labour Force Survey Sample Design* (cat. no. 6269.0).

### RELIABILITY OF ESTIMATES

**24** Two types of error are possible in an estimate based on a sample survey: sampling error and non-sampling error.

## EXPLANATORY NOTES *continued*

### RELIABILITY OF ESTIMATES

*continued*

**25** Sampling error occurs because a sample, rather than the entire population, is surveyed. One measure of the likely difference resulting from not including all dwellings in the survey is given by the standard error. There are about two chances in three that a sample estimate will differ by less than one standard error from the figure that would have been obtained if all dwellings had been included in the survey, and about nineteen chances in twenty that the difference will be less than two standard errors. Standard errors of key estimates for the latest month and of movements since the previous month of these estimates are shown in the standard errors section of this publication. Standard errors for other estimates and other movements may be calculated by using the spreadsheet contained in *Labour Force Survey Standard Errors, Data Cube* (cat. no. 6298.0.55.001) which is available free of charge on the ABS website <<http://www.abs.gov.au>>.

**26** Non-sampling error arises from inaccuracies in collecting, recording and processing the data. Every effort is made to minimise reporting error by the careful design of questionnaires, intensive training and supervision of interviewers, and efficient data processing procedures. Non-sampling error also arises because information cannot be obtained from all persons selected in the survey. The Labour Force Survey receives a high level of co-operation from individuals in selected dwellings, with the average response rate over the last year being 97%. See Glossary for definition of response rate.

### SEASONAL ADJUSTMENT AND TREND ESTIMATION

**27** Seasonal adjustment is a means of removing the estimated effects of normal seasonal variation from the series so that the effects of other influences on the series can be more clearly recognised. Seasonal adjustment does not aim to remove the irregular or non-seasonal influences which may be present in any particular month. This means that month-to-month movements of the seasonally adjusted estimates may not be reliable indicators of trend behaviour.

**28** The Labour Force Survey uses the concurrent seasonal adjustment method to derive seasonal factors. Concurrent seasonal adjustment uses data up to the current month to estimate seasonal factors for the current and all previous months. This process can result in revisions each month to estimates for earlier periods. However, in most instances, the only noticeable revisions will be to the seasonally adjusted estimates for the previous month and one year prior to the current month.

**29** The revision properties of the seasonally adjusted and trend estimates can be improved by the use of Autoregressive Integrated Moving Average (ARIMA) modelling. ARIMA modelling relies on the characteristics of the series being analysed to project future period data. The projected values are temporary, intermediate values, that are only used internally to improve the estimation of the seasonal factors. The projected data do not affect the original estimates and are discarded at the end of the seasonal adjustment process. The Labour Force Survey uses an ARIMA model for 95% of the individual time series. The ARIMA model is assessed as part of the annual reanalysis. For further details, see the feature article in *Australian Economic Indicators, Oct 2004* (cat. no. 1350.0).

**30** Seasonal adjustment is able to remove the effect of events which occur at the same time in the survey every year. However, there are some events, like holidays, which are not always at the same time in the survey cycle or which are not at the same time across Australia. The effects of these types of events on Labour Force Survey estimates cannot in all cases be removed, because the pattern of their effects cannot be determined. However, two events which are adjusted for in the seasonally adjusted series are the January interview start date and the timing of Easter. For further details, see *Information Paper: Forthcoming Changes to Labour Force Statistics* (cat. no. 6292.0) released in December 2003.

## EXPLANATORY NOTES *continued*

### SEASONAL ADJUSTMENT AND TREND ESTIMATION *continued*

**31** While seasonal factors for the complete time series are estimated each month, they will continue to be reviewed annually at a more detailed level to take into account each additional year's original data. This annual review will not normally result in significant changes to published estimates. The review is usually conducted in February each year with the results released in the February issue of this publication.

**32** The smoothing of seasonally adjusted series to produce 'trend' series reduces the impact of the irregular component of the seasonally adjusted series. These trend estimates are derived by applying a 13-term Henderson-weighted moving average to all months except the last six. The last six monthly trend estimates are obtained by applying surrogates of the Henderson average to the seasonally adjusted series. Trend estimates are used to analyse the underlying behaviour of a series over time.

**33** While this smoothing technique enables estimates to be produced for the latest month, it does result in revisions in addition to those caused by the revision of seasonally adjusted estimates. Generally, revisions due to the use of surrogates of the Henderson average become smaller, and after three months have a negligible impact on the series.

**34** Trend estimates are published for the Northern Territory in table 10 and for the Australian Capital Territory in table 11. Unadjusted series for the two Territories have shown, historically, a high degree of variability, which can lead to considerable revisions to the seasonally adjusted estimates each month when seasonal factors are estimated. For this reason, seasonally adjusted estimates are not currently published for the two Territories. In addition, caution should be exercised in the interpretation of trend estimates for the two Territories, particularly for the three most recent months, where revisions may be relatively large.

**35** For further information, see *A Guide to Interpreting Time Series – Monitoring Trends* (cat. no. 1349.0) or contact the Assistant Director, Time Series Analysis on (02) 6252 6345 or email [time.series.analysis@abs.gov.au](mailto:time.series.analysis@abs.gov.au).

### RELATED PUBLICATIONS

**36** Users may also wish to refer to *Australian Labour Market Statistics* (cat. no. 6105.0). This publication contains additional tables and a detailed list of related publications. For further information about this publication, please contact the Assistant Director, Labour Market Statistics on (02) 6252 7636.

**37** ABS Information about the labour market can be found on the Labour theme page on the ABS website <<http://www.abs.gov.au>> (Themes).

**38** Information about current publications and other products released by the ABS is available from the statistics page on the ABS website. The ABS also issues a daily release advice on the website, Upcoming Product Releases which details products to be released in the week ahead.

### DATA AVAILABLE ON REQUEST

**39** As well as the statistics included in this and related publications, the ABS may have other relevant data available. Inquiries should be made to the Labour Force contact officer on (02) 6252 6525, email [labourforce@abs.gov.au](mailto:labourforce@abs.gov.au) or to any ABS office.

### EFFECTS OF ROUNDING

**40** Estimates have been rounded and discrepancies may occur between sums of the component items and totals. Estimates of movement shown in this publication are obtained by taking the difference of unrounded estimates. The movement estimate is then rounded to one decimal place. Where a discrepancy occurs between the reported movement and the difference of the rounded estimates, the reported movement will be more accurate.

## EXPLANATORY NOTES *continued*

### SYMBOLS AND ABBREVIATIONS

### 41 SYMBOLS AND ABBREVIATIONS

<i>Symbol</i>	<i>Definition</i>
'000	thousands
%	percentage
ABS	Australian Bureau of Statistics
CAI	computer assisted interviewing
cat. no.	catalogue number
ERP	estimated resident population
f/t	full time
LFS	Labour Force Survey
p/t	part time
pts	percentage points
Seas adj.	seasonally adjusted
TAFE	Technical and Further Education



## STANDARD ERRORS

### STANDARD ERRORS

The estimates in this publication are based on information gained from the occupants of a sample survey of dwellings. Because the entire population is not surveyed, the published estimates are subject to sampling error. The most common way of quantifying such sampling error is to calculate the standard error for the published estimate or statistic. For more information, see paragraphs 24 to 26 of the Explanatory Notes.

### LEVEL ESTIMATES

To illustrate, let us say the published level estimate for employed persons aged 15–19 years is 700,000 and the associated standard error is 8,300. The standard error is then used to interpret the level estimate of 700,000. For instance, the standard error of 8,300 indicates that:

- There are approximately two chances in three that the real value falls within the range 691,700 to 708,300 ( $700,000 \pm 8,300$ )
- There are approximately nineteen chances in twenty that the real value falls within the range 683,400 to 716,600 ( $700,000 \pm 16,600$ ).

The real value in this case is the result we would obtain if we could enumerate the total population.

The following table shows the standard errors for this month's level estimates.

		AUSTRALIA										
		NSW	Vic.	Qld	SA	WA	Tas.	NT	ACT	Males	Females	Persons
<b>Aged 15 years and over</b>												
Employed												
Full time	'000	20.3	20.5	15.2	6.7	9.7	2.7	3.9	2.3	26.7	18.8	32.2
Part time	'000	14.4	13.1	10.1	4.9	6.8	2.1	1.2	1.6	11.1	17.3	21.4
Total	'000	22.5	25.0	17.4	7.7	10.7	3.2	4.6	2.5	29.1	26.6	36.7
Unemployed												
Looking for f/t work	'000	8.6	7.1	6.3	2.7	3.5	1.1	0.5	0.8	10.1	8.2	13.1
Looking for p/t work	'000	5.4	4.5	3.7	2.0	2.1	0.7	0.3	0.6	4.9	6.5	8.2
Total	'000	10.3	8.5	7.1	3.3	4.1	1.3	0.7	1.0	11.3	10.5	15.6
Labour force	'000	22.8	25.8	17.8	7.9	10.8	3.3	4.7	2.5	29.8	27.4	37.3
Not in labour force	'000	21.1	23.2	15.2	7.1	10.5	3.1	3.6	2.2	24.3	29.0	34.2
Unemployment rate												
Looking for f/t work	pts	0.3	0.3	0.4	0.5	0.4	0.7	0.5	0.5	0.2	0.3	0.2
Looking for p/t work	pts	0.5	0.5	0.5	0.7	0.6	0.7	1.3	1.1	0.4	0.3	0.2
Total	pts	0.3	0.3	0.3	0.4	0.3	0.5	0.5	0.5	0.2	0.2	0.1
Participation rate	pts	0.4	0.6	0.5	0.6	0.6	0.8	2.8	0.9	0.3	0.3	0.2
<b>Aged 15–19 years</b>												
Employed												
Full time	'000	3.4	2.5	2.7	1.1	1.8	0.5	0.4	0.4	4.6	3.6	5.4
Part time	'000	4.7	4.1	3.6	1.6	2.2	0.7	0.4	0.6	5.4	6.1	7.8
Total	'000	5.6	4.7	4.6	1.9	2.9	0.9	0.6	0.7	6.7	6.7	9.3
Unemployed												
Looking for f/t work	'000	2.9	2.2	2.7	1.1	1.7	0.4	0.1	0.4	3.8	3.2	5.0
Looking for p/t work	'000	3.1	3.1	2.2	1.3	1.2	0.4	0.2	0.4	3.4	3.9	5.2
Total	'000	4.4	3.8	3.7	1.8	2.1	0.6	0.3	0.5	5.2	5.0	7.3
Labour force	'000	6.1	5.2	5.1	2.2	3.2	0.9	0.6	0.8	7.3	7.3	10.2
Not in labour force	'000	8.2	6.6	5.1	2.4	3.4	0.9	0.7	0.9	8.3	7.9	11.8
Unemployment rate												
Looking for f/t work	pts	3.3	4.2	3.3	5.4	3.7	4.9	2.7	9.6	2.0	2.9	1.7
Looking for p/t work	pts	1.8	2.0	1.8	2.8	2.1	2.9	3.4	3.8	1.4	1.1	0.9
Total	pts	1.7	1.9	1.8	2.6	2.0	2.6	2.5	3.8	1.2	1.1	0.8
Participation rate	pts	1.3	1.4	1.6	2.0	2.0	2.7	3.9	3.2	1.0	1.0	0.7
Unemployment to population ratio – looking for f/t work	pts	0.6	0.6	0.9	1.0	1.1	1.2	0.7	1.6	0.5	0.4	0.3

## STANDARD ERRORS *continued*

### MOVEMENT ESTIMATES

The following example illustrates how to use the standard error to interpret a movement estimate. Let us say that one month the published level estimate for females employed part-time in Australia is 1,890,000; the next month the published level estimate is 1,900,000 and the associated standard error for the movement estimate is 9,500. The standard error is then used to interpret the published movement estimate of 10,000. For instance, the standard error of 9,500 indicates that:

- There are approximately two chances in three that the real movement between the two months falls within the range 500 to 19,500 (10,000 + or - 9,500)
- There are approximately nineteen chances in twenty that the real movement falls within the range -9,000 to 29,000 (10,000 + or - 19,000).

The following table shows the standard errors for this month's movement estimates.

										AUSTRALIA										
										Males	Females	Persons								
										NSW	Vic.	Qld	SA	WA	Tas.	NT	ACT			
<b>Aged 15 years and over</b>																				
Employed																				
Full time	'000	13.6	11.0	9.8	3.8	6.1	1.7	1.3	1.6	17.3	12.5	21.8								
Part time	'000	8.8	7.4	6.1	2.7	4.0	1.3	0.6	1.0	7.9	11.7	14.0								
Total	'000	16.4	13.4	13.2	5.4	7.7	2.1	1.4	1.9	19.1	17.3	26.7								
Unemployed																				
Looking for f/t work	'000	8.7	6.9	6.9	2.6	3.9	1.1	0.5	0.9	10.4	8.4	13.5								
Looking for p/t work	'000	5.4	4.9	4.4	1.9	2.4	0.7	0.3	0.7	5.7	6.7	8.8								
Total	'000	10.4	8.4	8.4	3.2	4.6	1.3	0.5	1.1	11.9	10.8	16.3								
Labour force	'000	16.9	13.8	13.9	5.7	8.1	2.2	1.4	1.9	19.7	17.8	27.6								
Not in labour force	'000	15.6	12.7	11.7	5.1	7.2	2.1	1.2	1.8	15.0	18.9	24.9								
Unemployment rate																				
Looking for f/t work	pts	0.4	0.4	0.4	0.5	0.4	0.7	0.5	0.5	0.2	0.3	0.2								
Looking for p/t work	pts	0.5	0.5	0.6	0.7	0.6	0.8	1.4	1.1	0.5	0.3	0.2								
Total	pts	0.3	0.3	0.3	0.4	0.4	0.5	0.6	0.5	0.2	0.2	0.1								
Participation rate	pts	0.3	0.3	0.4	0.4	0.4	0.5	0.8	0.7	0.2	0.2	0.2								
<b>Aged 15-19 years</b>																				
Employed																				
Full time	'000	2.6	1.9	2.2	0.9	1.5	0.4	0.3	0.3	3.6	2.9	4.2								
Part time	'000	3.7	3.1	2.8	1.2	1.8	0.5	0.3	0.5	4.1	4.6	5.8								
Total	'000	4.3	3.4	3.4	1.4	2.2	0.6	0.4	0.5	5.1	5.1	6.8								
Unemployed																				
Looking for f/t work	'000	3.1	2.4	2.9	1.1	1.8	0.4	0.1	0.4	4.1	3.3	5.2								
Looking for p/t work	'000	3.3	3.2	2.8	1.3	1.5	0.4	0.2	0.4	4.0	4.0	5.7								
Total	'000	4.6	4.0	4.1	1.7	2.2	0.6	0.3	0.6	5.8	5.2	7.7								
Labour force	'000	4.6	3.8	3.6	1.5	2.4	0.7	0.4	0.6	5.5	5.5	7.3								
Not in labour force	'000	5.2	4.1	3.5	1.6	2.3	0.7	0.5	0.6	5.9	5.7	7.8								
Unemployment rate																				
Looking for f/t work	pts	3.7	4.8	3.6	5.7	3.9	5.5	3.5	10.7	2.2	3.2	1.8								
Looking for p/t work	pts	1.9	2.1	2.0	3.1	2.4	2.9	4.4	3.9	1.5	1.2	1.0								
Total	pts	1.8	2.0	2.0	2.8	2.2	2.7	3.1	4.0	1.3	1.2	0.9								
Participation rate	pts	1.0	1.0	1.2	1.4	1.5	1.9	2.5	2.5	0.7	0.7	0.5								
Unemployment to population ratio - looking for f/t work	pts	0.6	0.7	0.9	1.0	1.1	1.2	0.6	1.7	0.5	0.4	0.3								

## GLOSSARY

<b>Actively looking for work</b>	Includes writing, telephoning or applying in person to an employer for work; answering an advertisement for a job; checking factory noticeboards or the touchscreens at the Centrelink offices; being registered with Centrelink as a jobseeker; checking or registering with any other employment agency; advertising or tendering for work; and contacting friends or relatives.
<b>Actual hours of work</b>	<p>Actual hours of work refers to a specified reference period and includes:</p> <ul style="list-style-type: none"><li>■ hours actually worked during normal periods of work;</li><li>■ time spent in addition to hours worked during normal periods of work (including overtime);</li><li>■ time spent at the place of work on activities such as the preparation of the workplace, repairs and maintenance, preparation and cleaning of tools, and the preparation of receipts, time sheets and reports;</li><li>■ time spent at the place of work waiting or standing by; and</li><li>■ time corresponding to short rest periods.</li></ul> <p>Excluded are:</p> <ul style="list-style-type: none"><li>■ hours paid for but not worked, such as paid annual leave, public holidays or paid sick leave;</li><li>■ meal breaks; and</li><li>■ time spent on travel to and from work (excluding some self-employed).</li></ul> <p>For multiple job holders actual hours worked should equal the hours worked at all jobs.</p>
<b>Aggregate monthly hours worked</b>	<p>Aggregate monthly hours worked measures the total number of actual hours worked by employed persons in a calendar month. It differs from the actual hours worked estimates (and the usual hours worked estimates) since these refer only to the hours worked in the reference week.</p> <p>Actual and usual hours worked cannot be aggregated across time to produce either quarterly or annual estimates as they relate to only a single week in the month. In contrast, aggregate monthly hours worked estimates are a true monthly measure, and may be aggregated across time to produce both quarterly and annual estimates.</p>
<b>Attending full time education</b>	Persons aged 15–24 years enrolled at secondary or high school or enrolled as a full time student at a Technical and Further Education (TAFE) college, university, or other educational institution in the reference week.
<b>Attending school</b>	Persons aged 15–19 years enrolled at secondary or high school in the reference week.
<b>Attending tertiary educational institution full time</b>	Persons aged 15–24 years enrolled full time at a TAFE college, university, or other educational institution in the reference week, except those persons aged 15–19 years who were still attending school.
<b>Civilian population aged 15 years and over</b>	All usual residents of Australia aged 15 years and over except members of the permanent defence forces, certain diplomatic personnel of overseas governments customarily excluded from census and estimated population counts, overseas residents in Australia, and members of non-Australian defence forces (and their dependants) stationed in Australia.
<b>Composite Estimation</b>	The estimation methodology used in the Labour Force Survey. Composite Estimation uses sample responses from nearby months as well as from the reference month to derive estimates for the reference month. This approach achieves gains in efficiency by exploiting the high similarity between the responses provided by the same respondent in previous months. For details see <i>Information Paper: Forthcoming Changes to Labour Force Statistics, 2007</i> (cat. no. 6292.0).

## GLOSSARY *continued*

<b>Employed</b>	<p>All persons aged 15 years and over who, during the reference week:</p> <ul style="list-style-type: none"><li>■ worked for one hour or more for pay, profit, commission or payment in kind in a job or business, or on a farm (comprising employees, employers and own account workers); or</li><li>■ worked for one hour or more without pay in a family business or on a farm (i.e. contributing family workers); or</li><li>■ were employees who had a job but were not at work and were:<ul style="list-style-type: none"><li>■ away from work for less than four weeks up to the end of the reference week; or</li><li>■ away from work for more than four weeks up to the end of the reference week and received pay for some or all of the four week period to the end of the reference week; or</li><li>■ away from work as a standard work or shift arrangement; or</li><li>■ on strike or locked out; or</li><li>■ on workers' compensation and expected to return to their job; or</li></ul></li><li>■ were employers or own account workers, who had a job, business or farm, but were not at work.</li></ul>
<b>Employment to population ratio</b>	<p>For any group, the number of employed persons expressed as a percentage of the civilian population in the same group.</p>
<b>Flow estimates</b>	<p>Flow estimates are a measure of activity over a given period. For example, aggregate monthly hours worked is a measure of the total number of hours worked in a calendar month.</p>
<b>Full time aggregate monthly hours worked</b>	<p>Full time aggregate monthly hours worked measures the total number of hours worked in a calendar month by employed persons who actually worked 35 hours or more during the reference week.</p>
<b>Full time workers</b>	<p>Employed persons who usually worked 35 hours or more a week (in all jobs) and those who, although usually working less than 35 hours a week, worked 35 hours or more during the reference week.</p>
<b>Gross flows</b>	<p>The matching of respondents who report in consecutive months enables analysis of the transition of individuals between the different labour force status classifications, referred to as the <i>matched sample</i>. The transition counts between the different labour force status classifications from one point in time to the next are commonly referred to as <i>gross flows</i>.</p> <p>The figures presented in gross flows are presented in original terms only and do not align with published labour force estimates. The gross flows figures are derived from the matched sample between consecutive months, which after taking account of the sample rotation and varying non-response in each month is approximately 80 percent of the sample.</p> <p>Caution should be exercised when analysing these gross flows data due to:</p> <ul style="list-style-type: none"><li>■ the figures presented sum to approximately 80 percent of the population values as the gross flows data are based on the matched sample only;</li><li>■ there is no adjustment applied to account for changes due to seasonal patterns (referred to commonly as seasonal adjustment); and</li><li>■ the relative sizes of each transition class are subject to bias due to the matched sample being a non-representative sample.</li></ul>
<b>Labour force</b>	<p>For any group, persons who were employed or unemployed, as defined.</p>
<b>Labour force status</b>	<p>A classification of the civilian population aged 15 years and over into employed, unemployed or not in the labour force, as defined. The definitions conform closely to the international standard definitions adopted by the International Conferences of Labour Statisticians.</p>
<b>Labour force underutilisation rate</b>	<p>The sum of the number of persons unemployed and the number of persons in underemployment, expressed as a proportion of the labour force.</p>

## GLOSSARY *continued*

<b>Market sector</b>	The market sector is an industry grouping comprising the following industries: Agriculture, forestry and fishing; Mining; Manufacturing; Electricity, gas, water and waste services; Construction; Wholesale trade; Retail trade; Accommodation and food services; Transport, postal and warehousing; Information media and telecommunications; Finance and insurance services; Rental, hiring and real estate services; Professional, scientific and technical services; Administrative and support services; Arts and recreation services and Other services. Refer to <i>Australian National Accounts: Concepts, Sources and Methods</i> (cat. no. 5216.0).
<b>Non-market Sector</b>	The non-market sector is an industry grouping comprising the following industries: Education and training; Public administration & safety and, Health care and social assistance. Refer to <i>Australian National Accounts: Concepts, Sources and Methods</i> (cat. no. 5216.0).
<b>Not in labour force</b>	Persons who were not in the categories employed or unemployed as defined.
<b>Participation rate</b>	For any group, the labour force expressed as a percentage of the civilian population aged 15 years and over in the same group.
<b>Part time aggregate monthly hours worked</b>	Part time aggregate monthly hours worked measures the total number of hours worked in a calendar month by employed persons who actually worked 1 to 34 hours during the reference week.
<b>Part time workers</b>	Employed persons who usually worked less than 35 hours a week (in all jobs) and either did so during the reference week, or were not at work during the reference week.
<b>Response rate</b>	The number of fully responding dwellings expressed as a percentage of the total number of dwellings excluding sample loss. Examples of sample loss include: dwellings where all persons are out of scope and/or coverage; vacant dwellings; dwellings under construction; dwellings converted to non-dwellings; derelict dwellings; and demolished dwellings.
<b>Seasonally adjusted series</b>	A time series of estimates with the estimated effects of normal seasonal variation removed. See Explanatory Notes 27 to 31 for more detail.
<b>Stock estimates</b>	Stock estimates are a measure of certain attributes at a point in time and can be thought of as <i>stocktakes</i> . For example, the total number of employed persons is an account of the number of people who were considered employed in the Labour Force Survey reference week.
<b>Trend series</b>	A smoothed seasonally adjusted series of estimates. See Explanatory Notes 32 to 35 for more detail.
<b>Underemployment rate</b>	The number of underemployed workers expressed as a percentage of the labour force.
<b>Underemployed workers</b>	Employed persons aged 15 years and over who want, and are available for, more hours of work than they currently have. They comprise: <ul style="list-style-type: none"> <li>■ persons employed part time who want to work more hours and are available to start work with more hours, either in the reference week or in the four weeks subsequent to the survey; or</li> <li>■ persons employed full time who worked part time hours in the reference week for economic reasons (such as being stood down or insufficient work being available). It is assumed that these people wanted to work full time in the reference week and would have been available to do so.</li> </ul>
<b>Unemployed</b>	Persons aged 15 years and over who were not employed during the reference week, and: <ul style="list-style-type: none"> <li>■ had actively looked for full time or part time work at any time in the four weeks up to the end of the reference week and were available for work in the reference week; or</li> <li>■ were waiting to start a new job within four weeks from the end of the reference week and could have started in the reference week if the job had been available then.</li> </ul>
<b>Unemployed looking for full time work</b>	Unemployed persons who: <ul style="list-style-type: none"> <li>■ actively looked for full time work; or</li> </ul>

## GLOSSARY *continued*

---

<b>Unemployed looking for full time work</b> <i>continued</i>	<ul style="list-style-type: none"><li>■ were waiting to start a new full time job.</li></ul>
<b>Unemployed looking for part time work</b>	Unemployed persons who: <ul style="list-style-type: none"><li>■ actively looked for part time work only; or</li><li>■ were waiting to start a new part time job.</li></ul>
<b>Unemployment rate</b>	For any group, the number of unemployed persons expressed as a percentage of the labour force in the same group.
<b>Unemployment to population ratio</b>	For any group, the number of unemployed persons expressed as a percentage of the civilian population in the same group.
<b>Usual hours of work</b>	Usual hours of work refers to a typical period rather than to a specified reference period. The concept of usual hours applies both to persons at work and to persons temporarily absent from work, and is defined as the hours worked during a typical week or day. Actual hours worked (for a specific reference period) may differ from usual hours worked due to illness, vacation, strike, overtime work, a change of job or similar reasons.



## FOR MORE INFORMATION . . .

*INTERNET*      **www.abs.gov.au** the ABS website is the best place for data from our publications and information about the ABS.

### INFORMATION AND REFERRAL SERVICE

Our consultants can help you access the full range of information published by the ABS that is available free of charge from our website. Information tailored to your needs can also be requested as a 'user pays' service. Specialists are on hand to help you with analytical or methodological advice.

*PHONE*                      1300 135 070

*EMAIL*                      [client.services@abs.gov.au](mailto:client.services@abs.gov.au)

*FAX*                              1300 135 211

*POST*                          Client Services, ABS, GPO Box 796, Sydney NSW 2001

## FREE ACCESS TO STATISTICS

All statistics on the ABS website can be downloaded free of charge.

*WEB ADDRESS*      [www.abs.gov.au](http://www.abs.gov.au)